



SEApeat

Sustainable Management of Peatland Forests in Southeast Asia

SEApeat Country Report 2013

Malaysia

Holiday Inn Kuala Lumpur Glenmarie,
Shah Alam, Malaysia
16-20 December 2013



Partners :



Funded by :



European Union

Implemented by :



Global Environment
Centre

SEApeat Workplan 2013

ACTIVITY	MONTH												DETAILS DESCRIPTION	BUDGET (EUR)	Project Progress (%)
	1	2	3	4	5	6	7	8	9	10	11	12			
5.2.5 Study on best management practices development NSPSF														2,000	
Assessment on socio-economic of SHGSU & NSPSF (Oct 2012- Dec 2013)													Assessment survey form has been developed. It will be carried out among the SHGSU members/ private landholders / related government agencies	2,000	100% (June 2013)
6.3 Pilot testing of BMP & incentives at NSPSF														10,000	
NSPSF - assess the suitability of selected options and incentives and implement pilot activities connected to rehabilitation.													Monthly tree planting activities involving the public and local communities – 9 times in a year (2013) Celebration of WWD 13	7,000	100% (Oct 2013)
CSR/ Peatland rehabilitation package													To develop and secure 4 CSR projects for RMFR	1,000	100% (Oct 2013)
Development of Ecotourism products or Community based tourism													Ecotourism (including EE activities) products (services) has been identified and in process of providing training to conduct the activities Development of ecotourism packages & students packages Development of network to acknowledge and promote this activities under the Selangor	2,000	100% (July 2013)

SEApeat Workplan 2013

ACTIVITY	MONTH												DETAILS DESCRIPTION	BUDGET (EUR)	Project Progress (%)
	1	2	3	4	5	6	7	8	9	10	11	12			
6.5 Pilot testing of fire system in Selangor													6.5.2 Operating the system 6.5.3 Community patrol groups controlling fires	8,500	
Development of awareness materials, including concept development, design, printing and dissemination													Development of brochures on peatland fire awareness to educate public to decrease fire risk especially private and small landholders	1,000	100 % (Feb 2013)
Pilot testing and implementation of fire prediction and monitoring system in NSPSF.													FDRS monitoring conducted daily at RMFR and occasionally at 5 other selected sites around NSPSF (especially buffer zone)	5,500	100 % (Oct 2013)
Canal blocking and community fire patrolling programme in NSPSF.													The activities will be conducted through SHG activities, which include provision for canal blocking in buffer zone, purchase of related equipments; erection of signboards	2,000	100 % (April 2013)
Total (EUR)														20,500.00	

Main Project activities

- Activity Item 1.2.3 : Assess options for community involvement, livelihood improvement and pilot activities
- Activity Item 2.1.2 : Develop a system to predict peatland fires and monitor degradation in fire prone peatlands
- Activity item 2.1.3 : Implement activities in selected pilot sites to reduce the extent and severity of fires in peatland forests
- Activity item 2.2.1 : Support pilot sites to secure climate change related funding for REDD, carbon funds, PES, etc

Project activities in NSPSF

- **Proposed pilot area North Selangor Peat Swamp Forest (NSPSF)**
- **Issues & actions**
 - Forest Fire management
 - Drainage blockings
 - Town development
 - Stakeholder involvement
 - Integrated management (including buffer zone management)
 - Addressing root causes – capacity, planning,
 - Community based rehabilitation programme
 - Establishment of North Selangor Peat Swamp Forest (SHGSU)
 - Established a Special Task Force/ Committee for North Selangor Peatland Fire Prevention
 - Community Based Peatland Forest Fire Management (CBFFM) implemented
 - Peatland Forest Ranger Programme



Peat Swamp Forest in Selangor State



FOREST RESERVES IN SELANGOR



Sungai Karang FR (50,106 ha)

Raja Musa FR (23,486 ha)

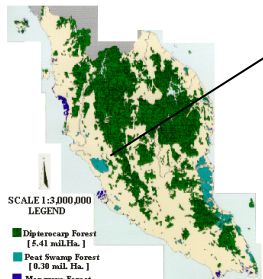
Pilot area for APFP &
SEApeat project

Kuala Langat Utara FR

(9,776 ha)

Kuala Langat Selatan FR

FOREST COVER MAP
PENINSULAR MALAYSIA



SCALE 1:3,000,000
LEGEND

■ Dipterocarp Forest
[5.41 mil.Ha.]
■ Peat Swamp Forest
[0.38 mil.Ha.]
■ Mangrove Forest
[0.11 mil.Ha.]
■ Other Land Use
■ Water Bodies

KEY :

FOREST TYPES :

■ INLAND FOREST
■ MANGROVE FOREST
■ PEAT SWAMP FOREST

DISTRICTS :

■ PANTAI KLANG
■ SELANGOR TENGAH
■ HULU SELANGOR

WWD 13 Celebration

- Organised on 23rd February 2013
- No. of trees planted: 500 (tenggek burung) & 500 (Kelat Paya)
- Species: *Euodia sp* (locally known as Tenggek Burung) & *Eugenia spp.* (locally known as Kelat paya)
- 2 canal blocking
- launched a **peatland forest fire and haze prevention campaign** with the tagline **“No Peat Fire, No Haze”**.
- No. participants : 450 pax (237 male participants (53%) & 213 female participants (47%))



Monthly Tree Planting Programme 2013

- The Community-based Rehabilitation Programme activities had been planned for community participation and conducted regularly on monthly basis. In this reporting period (Feb – Oct 2013) about **10 planting activities** organised for the public involving **43 groups consisting 1686 volunteers**. The rehabilitation programme also saw **11 hectares** of degraded peatland area in RMFR planted with **7,343 tree saplings**.

participants ratio male - 45% & female -55%





Corporate Social Responsibility (CSR 2013)



- Bridgestone
- HSBC Bank Malaysia
- FedEx Malaysia
- Timberland
- 99 Speedmart Sdn. Bhd
- UUM



CSR support was solicited for community-based peatland rehabilitation programme at RMFR and was successful in attracting **6 companies** this reporting period (Jan – Oct 2013). In total about **850 trees** were planted in **2 hectares** with **296 volunteers / employees**
Male - 38% & female - 62%



Selangor Crown Prince had visited the project site on 28th August 2013. This event participated by more than 300 people. Selangor Crown Prince planted trees together with the local community. This is a sign of the royal family's concern for conserving & preserving Raja Musa Forest Reserve. Selangor Crown Prince has requested the local community plays an important role in protection the natural resources that have been blessed by God for human wellbeing.

DIANJURKAN OLEH:



DITAJA OLEH:



DENGAN SOKONGAN:



HSBC



BENGKEL MENINGKATKAN KESEDARAN PIHAK BERKEPENTINGAN MENGENAI AKTIVITI PEMULIHARAAN DAN PENCEGAHAN KEBAKARAN TANAH GAMBUT DI NEGERI SELANGOR

1 HINGGA 3 OKTOBER 2013 | KG. AMPANGAN (HOMESTAY SG. SIREH, TANJUNG KARANG)

Participated by 40 participants
from various government
departments, private sectors and
local communities





There were two project site visits have been organised for ASEAN representative on August & September 2013. The first visit was on **5th August 2013**, Dr. Raman Letchumanan, Head of Environment Division, ASEAN Secretariat. The second one from Planning Meeting to Prepare for Phase 2 of the APFP/SEApeat organised at Kuala Lumpur Malaysia on 8-10 September 2013. **On 10th September 2013**, a field visit have been organised to experience on the APFP / SEApeat Malaysia component BMPs

SHGSU's Participation



1. SHGSU members – 73 members (65% female & 35% male)
2. Establishment of community nursery - to **supply peatswamp tree species** for the RMFR Forest Rehabilitation Programme and **support the socio-economic activities** of the local community (**buy-back system**) – 3 nurseries
3. Developing the ecotourism packages at SHGSU Kampung Ampangan
4. SHGSU had taken some actions to prevent forests fires in buffer zone, such as repair and build new canal block at the forest buffer of the Raja Musa Forest Reserve to raise up the water level and to be a fire prevention measures.
5. SHGSU's participation in exhibition and road shows to spread the awareness and education on Peat Swamp Forest Rehabilitation Programme at Raja Musa Forest Reserve WWD 13, WFD (IDF) and many others.
6. SHGSU's forest fire monitoring and prevention in buffer zone areas of the forest reserve on weekly basis during the less raining season from March to now (3 days in a week with four SHGSU members, 2 from Kg. Bestari Jaya & 2 from Kg. Raja Musa). **To date the project been sponsored 280 man days for forest fire monitoring & prevention.**
7. **SHGSU's also involved in the extinguished forest fire in buffer zone (East & West of Raja Musa Forest Reserve).**

SHGSU – Sahabat Hutan Gambut Selangor Utara
- Friend of North Selangor Peat Swamp Forest

Rehabilitation activity participated by public and local community





SHGS & local communities have been taken own initiative to patrol, control and extinguished forest fire in buffer zone



Eco tourism activity by Sahabat Hutan Gambut Selangor Utara (SHGSU) Kg Ampangan

Agrotourism Homestay Sungai Sireh

Ecotourism related activities :-

camping, jungle trekking, canoeing, birding, boating, and fishing for fresh water and many other activities

GEC Staff outing – boating and kampung tour on 23rd March 2013

A SHGSU Ecotoursim packaged been developed & proposal been submitted to Selangor Forestry Department to get approval for uses the forest reserve as one of the product in SHGSU Ecotourism activities



The project sponsored four community members from RMFR to participate in the **Peer Learning Programme on Best Management Practices on Peatlands for Community Groups at Banjarmasin**, Indonesia, **from 28 – 30 May 2013**. The objective of this peer learning programme is to support the community groups through improved capacities, understanding and experience sharing in implementing best management practices to promote sustainable peatland management.



- Tree planting
- Competition on essay writing in four language & poster drawing
- Annual PFR Camping (14-16 June 2013/
Destination Sabak Bernam District)



Fire Danger Rating System (FDRS)

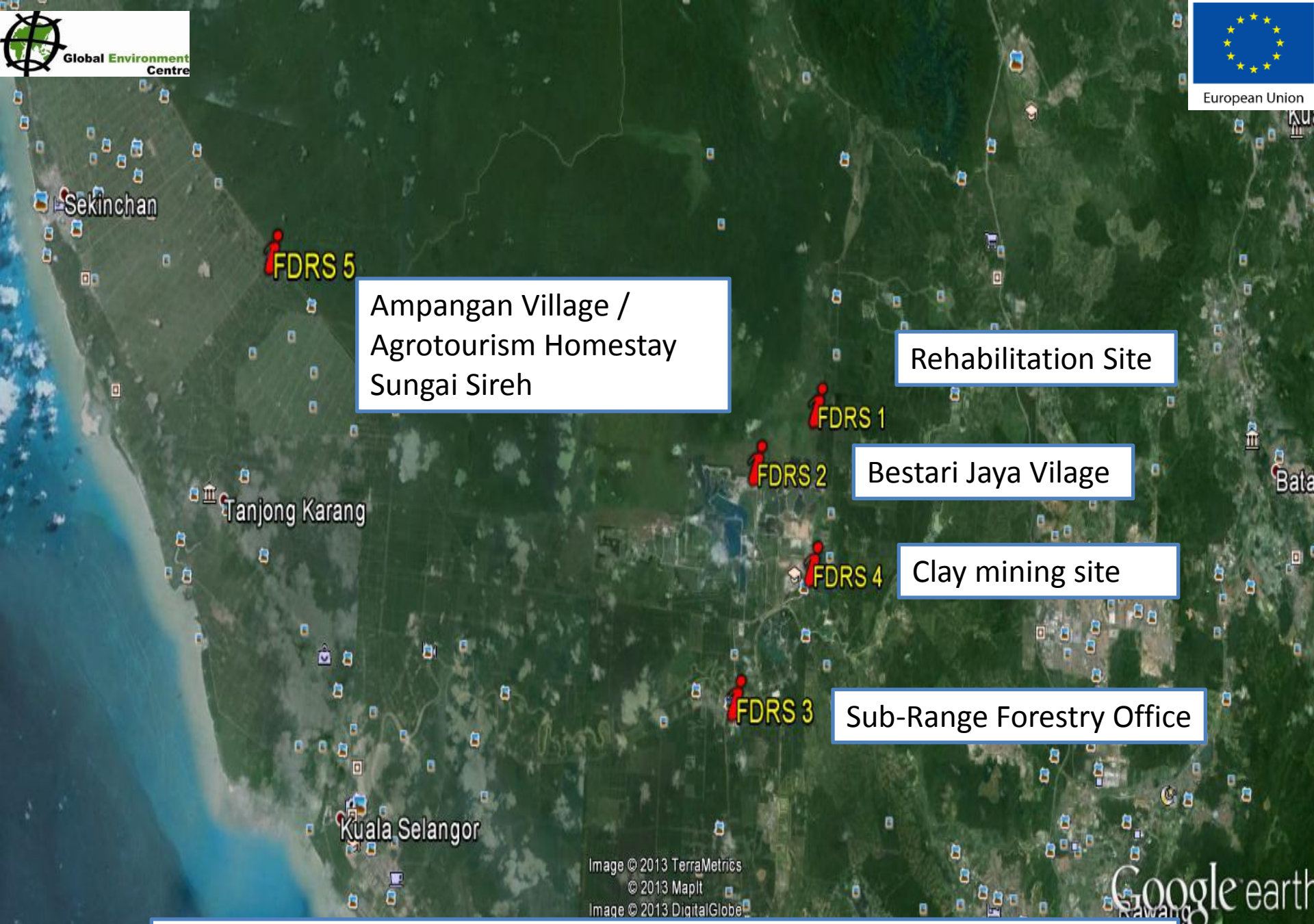
- Use of FDRS as an alert system to the forestry enforcement officer to monitor the area and time periods when fire danger is high.
- can be used in an action plan to determine when and where specific fire suppression resources need to be ready or mobilized



**Forest Fire prediction at
Peninsular Malaysia.
Peatland areas within the
Peninsular Malaysia are shaded
in the maps.**
www.met.gov.my

- The development of the Fire Prediction and Monitoring System by using the Fire Danger Rating System (FDRS) in peatlands has been progressing well through a multi-stakeholder joint effort.
- At the site level, SFD, GEC & SHGSU has continued with the implementation of FDRS monitoring at RMFR
- Further details, pls log into this website : ***www.met.gov.my***





FDRS signboards have been installed at 5 sites in RMFR

Monitoring Peatland Degradation & Stakeholder consultation – Year 2013 (Sime Darby)



Discussion with Sime Darby

19th Feb 2013 – SFD, GEC and Sime Darby had a meeting at Bukit Talang Estate to discuss on possibility of working together on a number of issues of mutual interest, which includes fire prevention, protection of the forest areas adjacent to plantation, promoting best management practices (BMP) for oil palm on peat, etc.



Aerial Survey to identify fires prone areas by GEC & SFD (October 2013)



Cooperative Fire Management – Task Force



- No one land or fire management agency can manage all the fire on its land alone
- Manage the fire problem at state land and private land
- Tackle the problem in a comprehensive manner
- Official coordination facilitated among sections in the local authorities at district level
- Chaired by DOE Selangor at State level
- Chaired by the respective District Officer (District and Land Office), members are local authorities, private sectors, community representative
- Duties / tasks: **Fire Prevention and Fire Suppression**

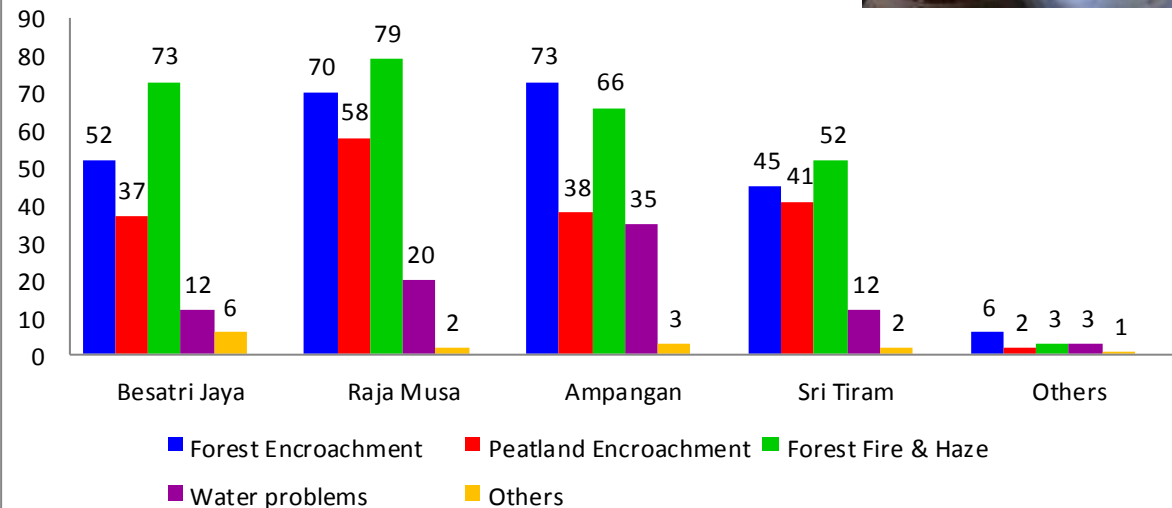
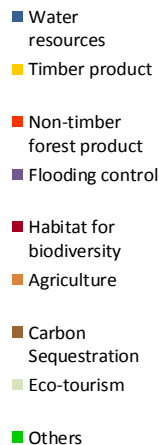


THE SOCIO-ECONOMIC SURVEY ON IMPORTANCE OF PEAT SWAMP FOREST ECOSYSTEM TO LOCAL COMMUNITIES ADJACENT TO RAJA MUSA FOREST RESERVE

- GEC in collaboration with Selangor Forestry Department & SHGSU and financially supported by European Union, carrying out a socio-economic survey in four SHGSU villages.
- The purpose of this survey is to find out how local communities surrounding the Raja Musa Forest Reserve (RMFR) use the forest resources and how they view on threats and opportunities in it.
- Field data are collecting through interviews of people in four villages located in the vicinity of the RMFR



GOODS & SERVICES



Outcome of the Socio-Economic Survey

- The villagers living in the vicinity of the RMFR gain **some benefits from the forest in terms of irrigation water for farming, fishing, fruit collection, etc.** however, for the majority of villagers, the main source of household income is generated from activities that are not related to **the peat swamp forest**. Still, the villagers hold **strong opinions about the use of the forest**.
- The forest is also used **for tourism and recreation**. The present level of use of the forest for such purposes is very low, but the demand for tourism and recreational facilities in adjacent forest and park area suggests that there is a **potential to develop recreational and eco-tourism facilities**.

Centre for Environmental Education and Community Training on Peatland Fire Prevention in Bestari Jaya, Selangor

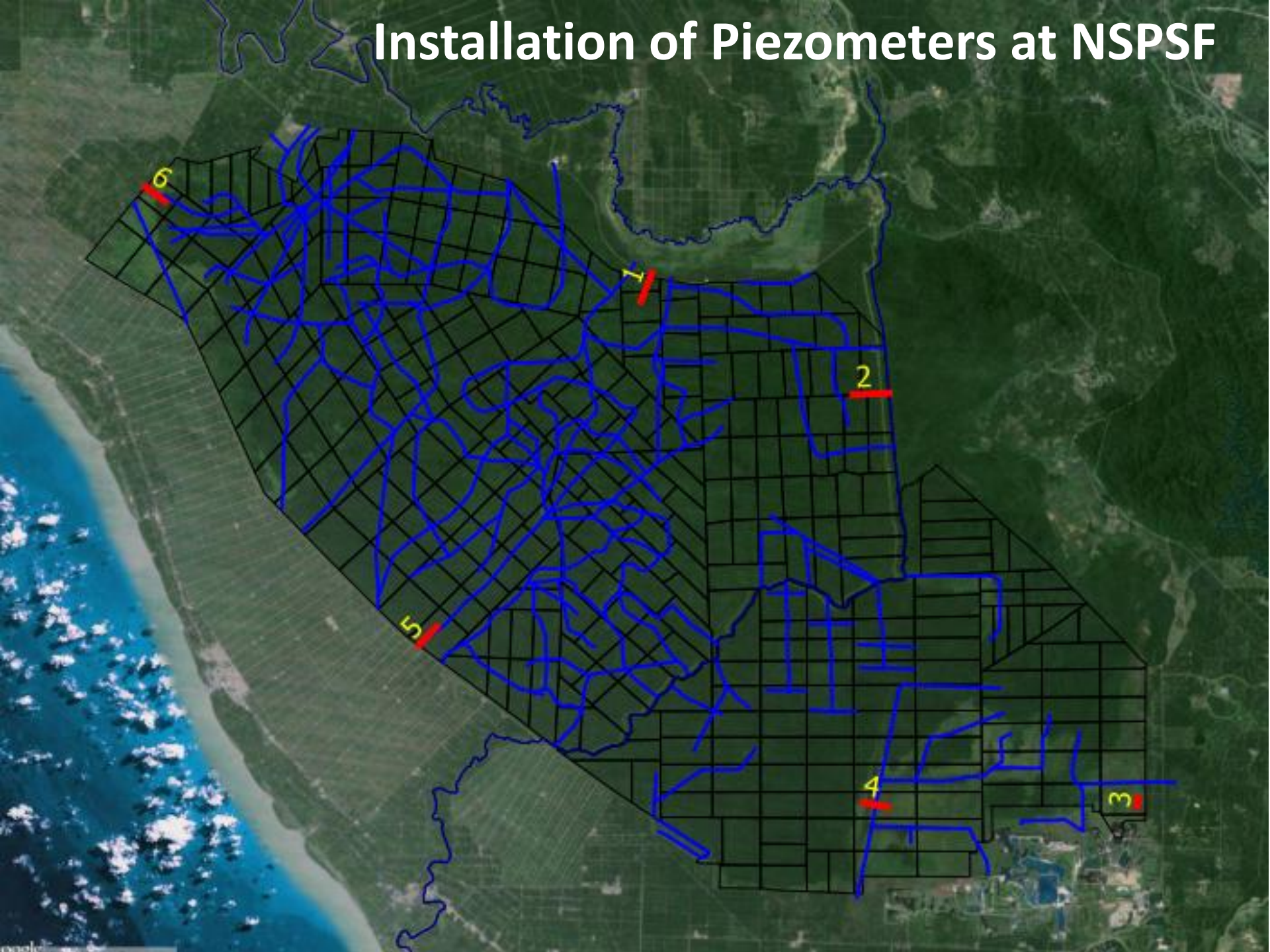
- To develop a Centre to promote & disseminate information related peatland fire prevention
- To establish Peatland Forest Fire Prevention Training & Education Program involving local communities & public



Field training on peat depth sampling and installation of Piezometers at water monitoring sites along (1- 10 December 2013)



Installation of Piezometers at NSPSF



ACTIVITY	Person/ Agencies involved	Dateline	MONTH												DETAILS DESCRIPTION	BUDGE T (EUR)
			1	2	3	4	5	6	7	8	9	10	11	12		
6.3 Pilot testing of BMP & incentives at NSPSF																15,000
NSPSF - assess the suitability of selected options and incentives and implement pilot activities connected to rehabilitation.	Nagarajan Hyrul Izwan, Nurhayati & SHGSU	Feb – Oct 2014													Monthly tree planting activities involving the public and local communities – 9 times in a year (2013) Celebration of WWD 13	8,000
CSR/ Peatland rehabilitation package	Nagarajan Hyrul Izwan, Nurhayati & SHGSU	Feb – Oct 2014													To develop and secure 4 CSR projects for RMFR	1,000
Development of Ecotourism products or Community based tourism	Nagarajan , Hyrul Izwan, Nurhayati & SHGSU	Feb – Oct 2014													Ecotourism (including EE activities) products (services) have been identified and in process of providing training to conduct the activities Development of ecotourism packages & students packages Development of network to acknowledge and promote this activities under the Selangor Tourism & MOT Sponsoring of the basic facilities for organising eco-tourism related activities (life jackets, canoes, and others are related)	6,000

Tree planting - 2008



10/12/2008

Tree planting - 2013



16th April 2013



Access road at Bridgestone planting site (31/1/2011)



Access road at Bridgestone planting site

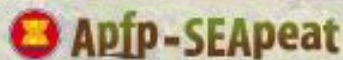


Bridgestone planting site – Block 1 (31/1/2011)



Bridgestone planting site – Block 1 (29/8/2012)

THANK YOU FOR SUPPORTING RAJA MUSA FOREST REHABILITATION PROGRAMME



ORGANIZED BY:



IN CONJUNCTION WITH WORLD WETLANDS DAY 2013

Our Precious Peatlands

www.seapeat.net

North Selangor Peat Swamp Forest, Malaysia

Thank you



Photograph



European Union