

Issues and Observations of Forestry Practices on Peatlands

**Case on Indonesia Mandatory Certification
Independent Monitoring**

M. Zainuri Hasyim

Yayasan Mitra Insani

Independent Forest Monitoring Network - Focal Point Riau

TLAS

(Timber Legality Assurance System)

- Purpose: to provide a reliable means to distinguish between legal and illegally produced forest products
- Indonesia – EU VPA → Mandatory
- 5 instruments:
 - A definition of legally-produced timber
 - Control of the supply chain
 - Verification
 - Issuance of licenses
 - Independent monitoring of the systems

TLAS

(Timber Legality Assurance System)

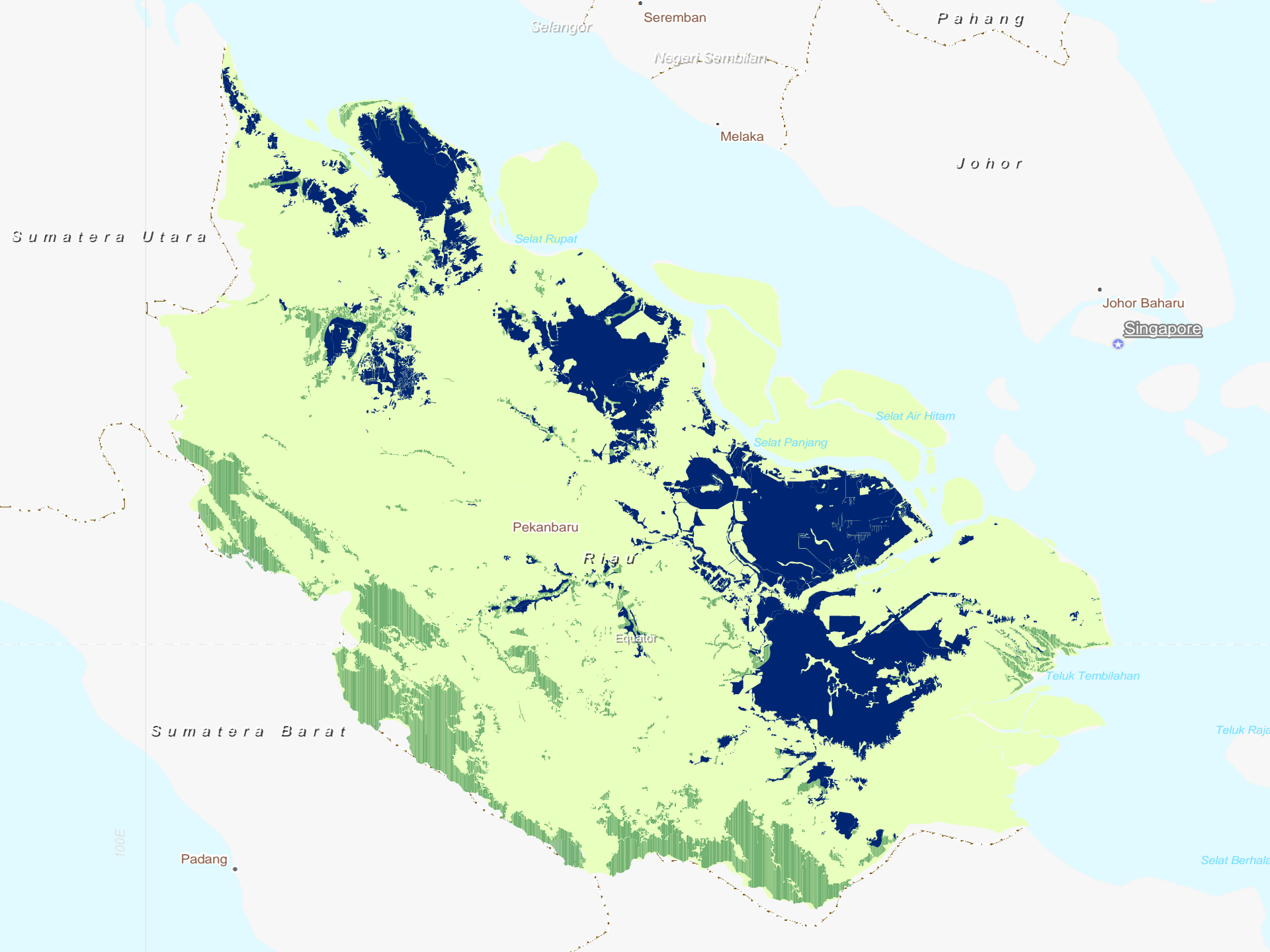
- Components:
 - Timber legality verification (VLK)
 - Sustainable forest management (PHPL)
- Background:
 - **Assurance:** legality and sustainable management
← *During is often questionable and dubious*
 - **Improvement of forestry governance** → forest destruction/illegal logging, transparency, multi-stakeholder participation, attacking corruption
 - **Consumer/market responsibility** → supply-demand

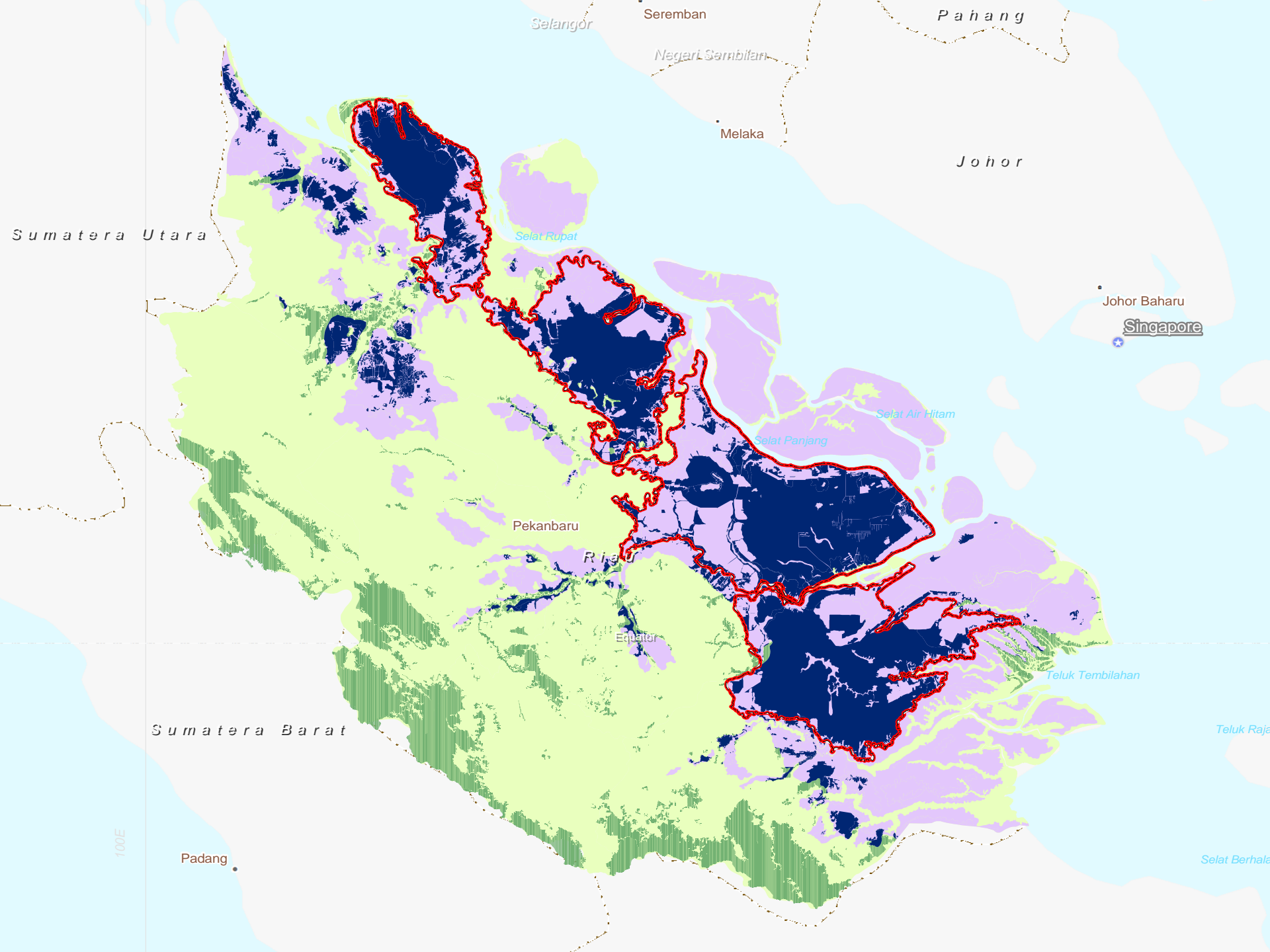
Peatland

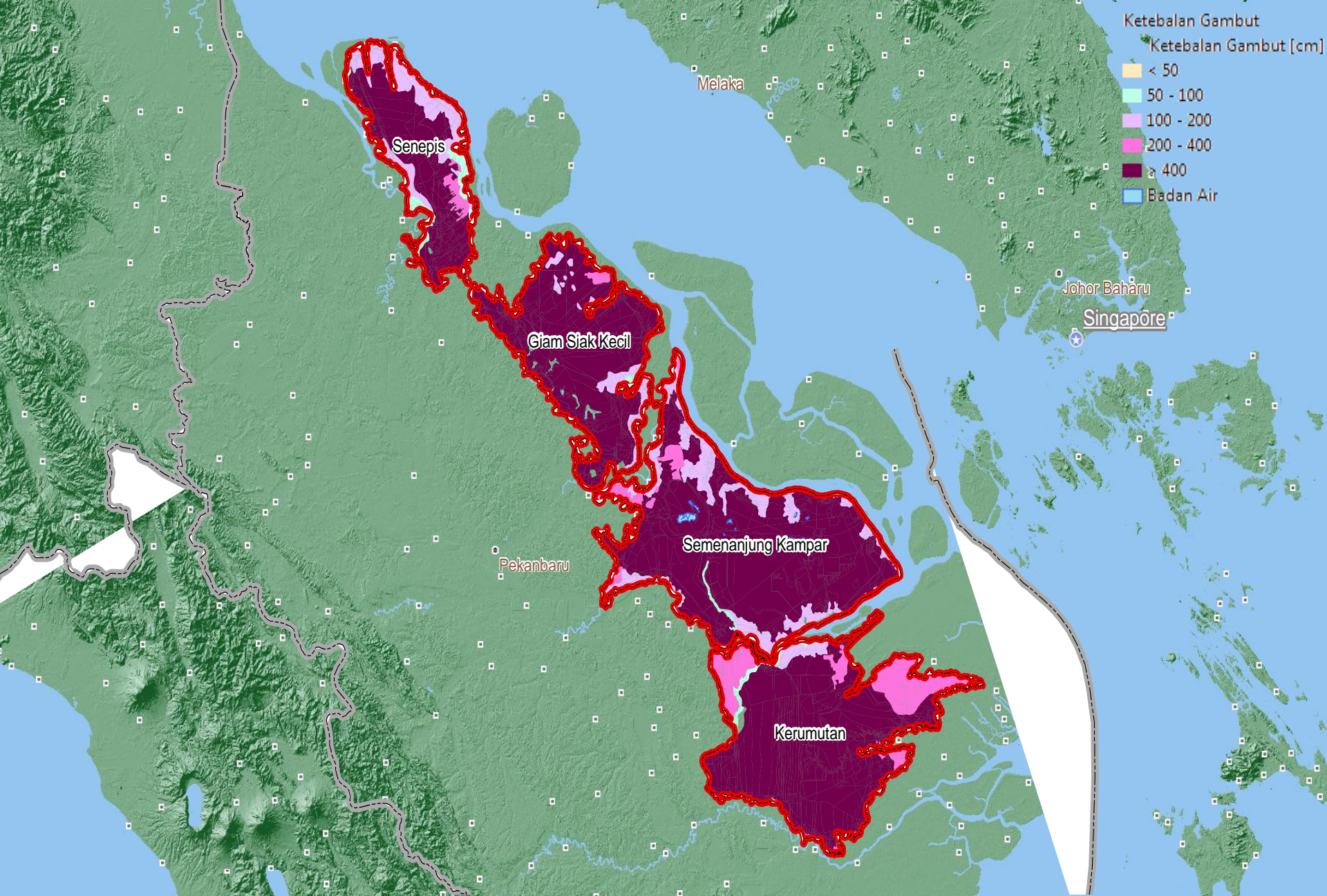
- Peat swamp forest is an ecosystem with a fragile and in endangered condition.
- Vulnerable because with un-proper treatment will interfere with its function, and hard to be restored.
- Endangered by the trend of peatland utilization due to the expansion of logging and conversion

Riau Peatland

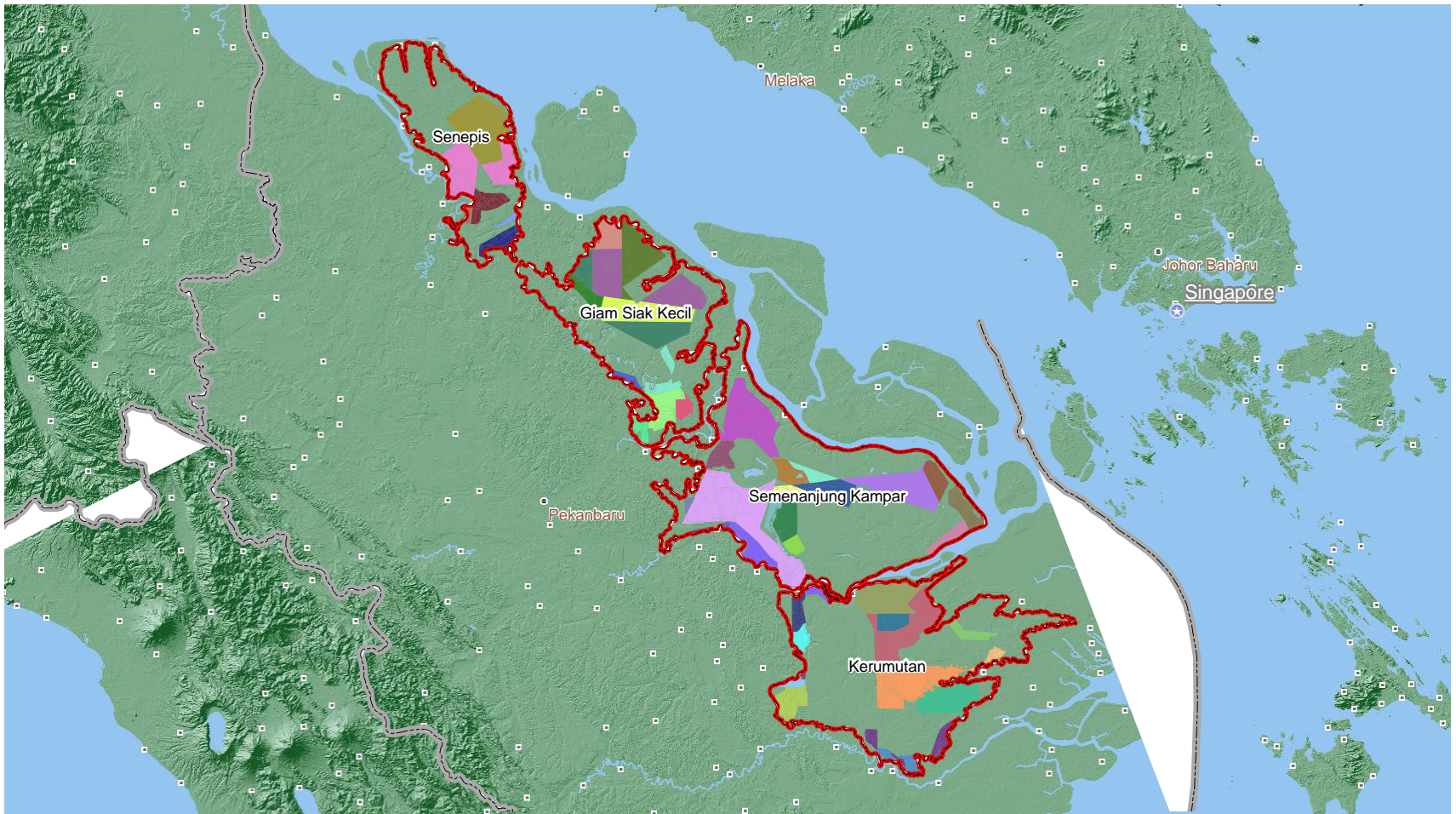
- Riau Province: 4 million hectares of peatlands (Wetlands International) and spread over 4 corridor area of peat
- There are 51 timber plantation concession with 824,099 hectares, 17 logging concession with 707,244 hectares, and 36 palm oil concession with 243,611 hectares (Jikalahari, 2010)



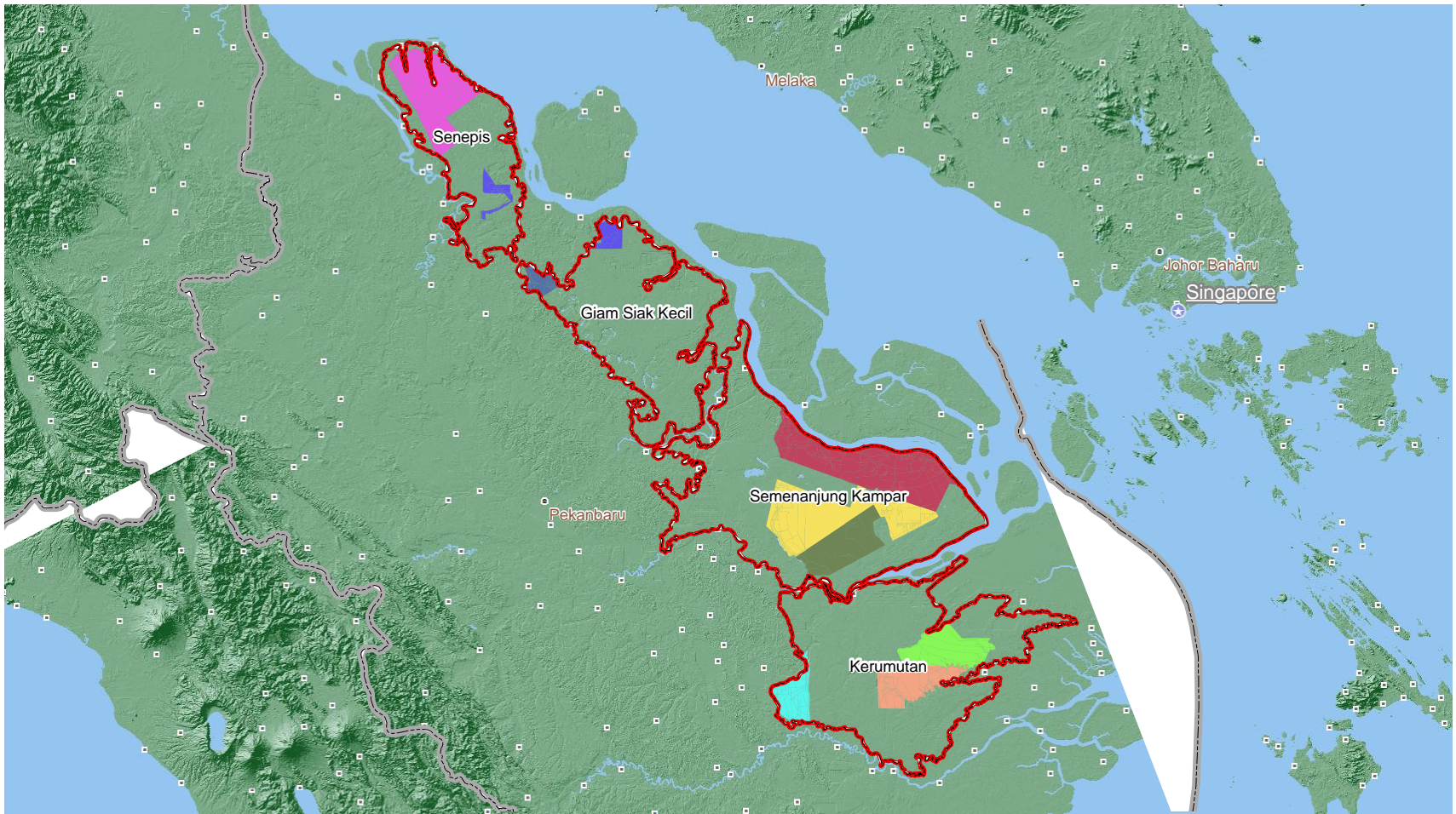




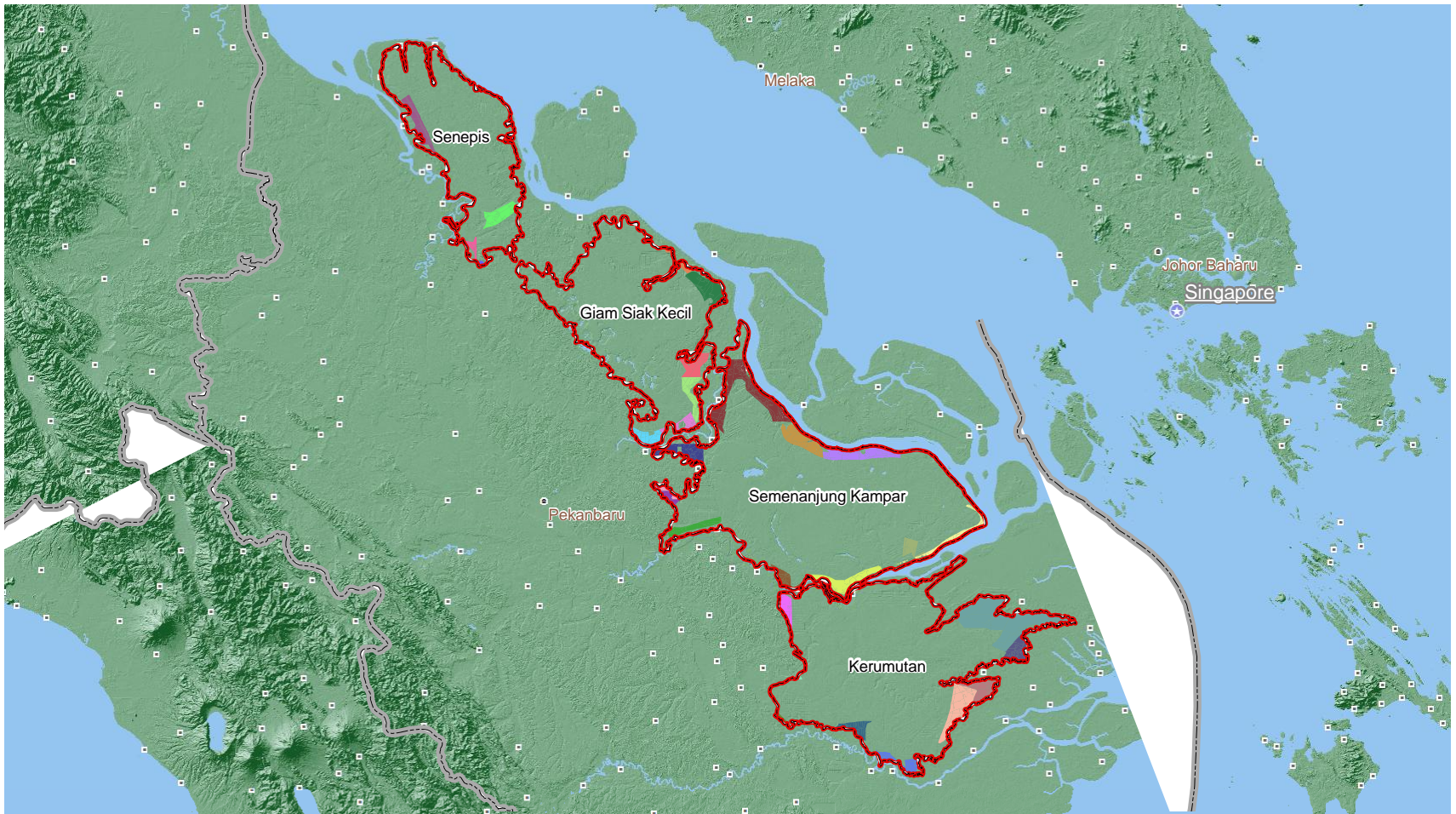
Timber Plantation



Logging Concession



Plantation



IFM Main Finding Issues

- **Many stakeholders put a big hope on efforts to improve forest management in Indonesia**
- **Permit is the main problem**
- **Limitation access to information, process, and location**
- **Not enough procedure and communication standart along the assesment and certification process**

IFM Main Finding Issues

- **There is no PEATLAND categorization on the assessment indicator:**
 - **Indicator Ecology 3.1**
 - **Indicator Ecology 3.3**
 - **Indicator Ecology 3.4**