



Future Merang Peat Dome Management: is Forest Management Unit and REDD a solution?

Presented by:

Djoko Setijono – MRPP CD Specialist

APFP Workshop on Option for Carbon Financing to Support Peatland Management
Pekanbaru, Riau, October 2010



Outline

- MRPP Profile
- General information
- Forest Management Unit Establishment
- MRPP Activities to Support FMU
- Challenges ahead for future management of Merang Peat Swamp Forest



MRPP Profile

- Donor: BMU Germany
- Budget: 1,433,454 Euro + 625.786 Euro
- Duration: 2009 – 2011
- German Implementing Agency: GTZ
- GoI Executing Authority: MoF/DitJen BPK
- GoI Co-Implementing Agency: The Governments of South Sumatra Province and MUBA District

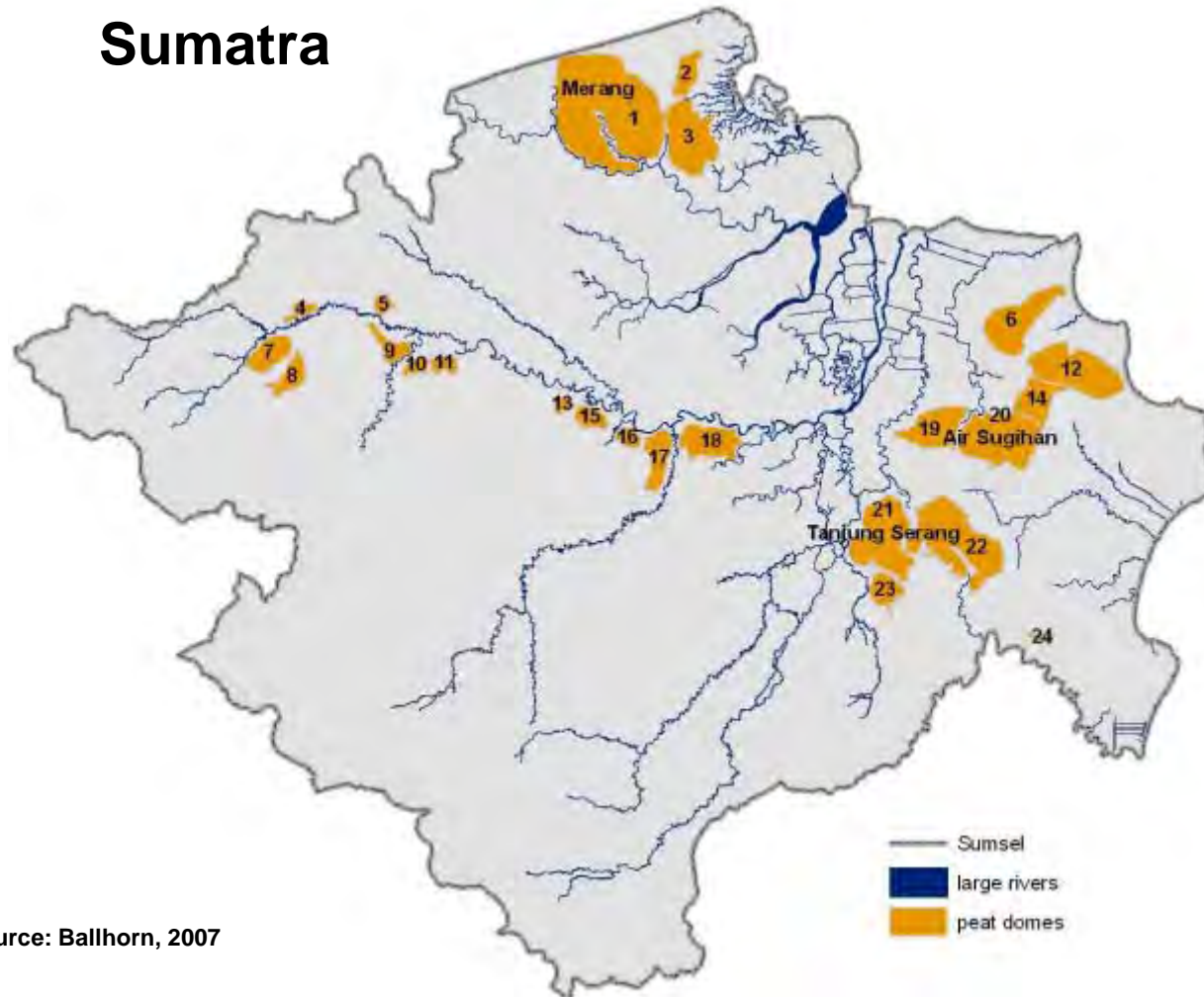


Project Purpose

- Protection and part rehabilitation of the last natural peat swamp forest in South Sumatra and its biodiversity through a Production Forest Management Unit / KPHP management system and preparation for REDD mechanism



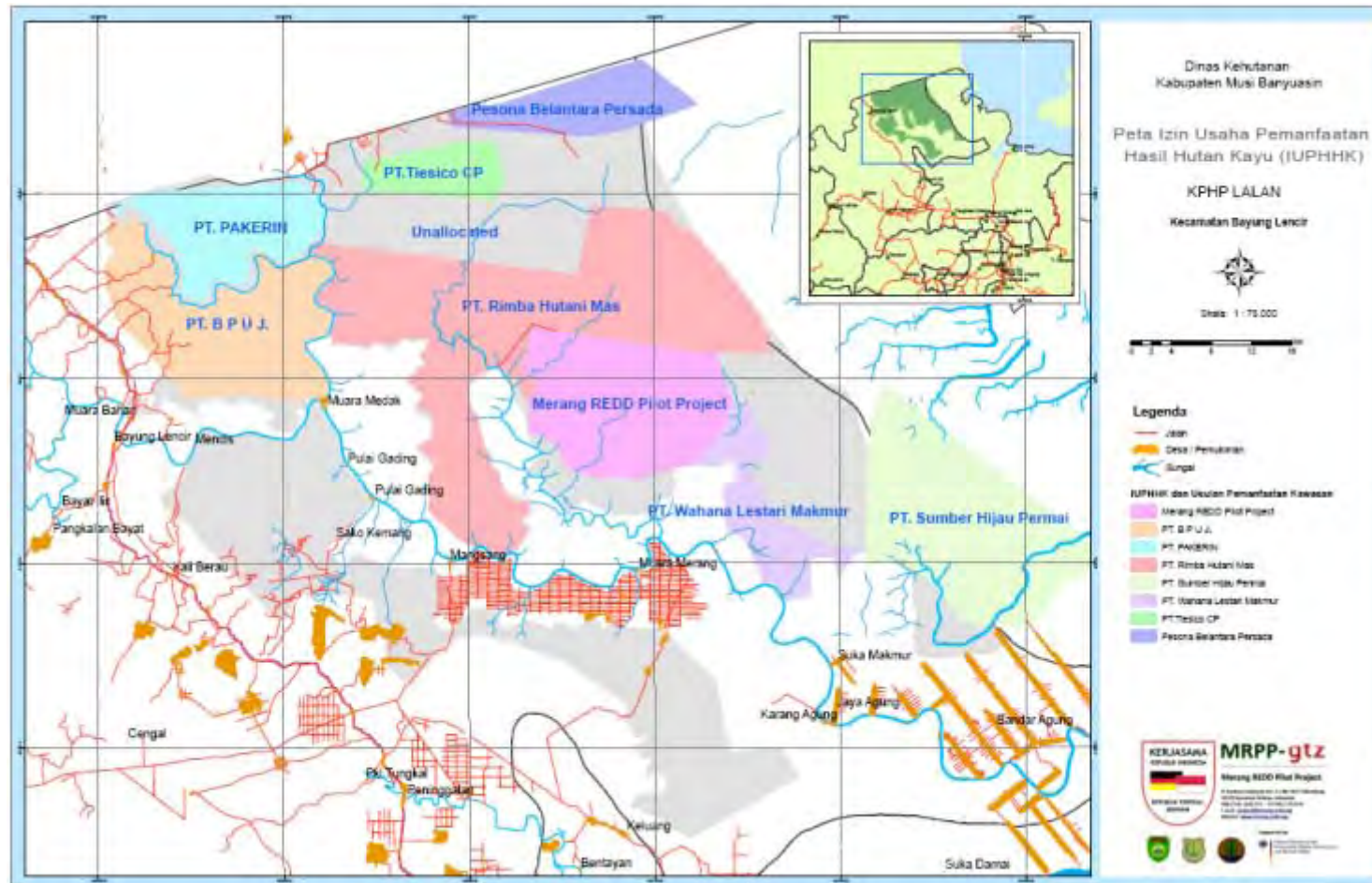
Peat dome distribution in South Sumatra



Source: Ballhorn, 2007



Current Land Use of Lalan Prod Forest Area





Illegal Logging as one of major threat for Merang Peat Swamp Forest

Rafted Illegal Logs



Rafted Illegal Sawn Timber





Illegal logs rafts being towed along Merang River





Establishment of Prod Forest Management Unit / KPHP Lalan

- Bupati MUBA/District Head Decree No. 23 and 24 dated 11 September 2009 on the Establishment of Lalan Production Forest Management Unit (FMU)
- Declared by Minister of Forestry as Lalan Prod FMU Model for South Sumatra, Minister Decree No. 789/Menhut-II/2009 dated 7 Desember 2009 for 265.953 Ha.



MRPP Activities

- Baseline compilation
- Community Development (CD)
- Nursery, Rehabilitation and Canal Blocking
- Climate Change and Biodiversity Conservation
- Forest and Carbon Monitoring:
 - Development and assessment of carbon measurement
 - Landscape assessment
 - Sample plots measurements
 - Tree-based carbon quantification
 - Forest Monitoring
- ICVKM
 - Website, REDD Library, Campaign/Awareness materials



Carbon Measurement System

Tree-based carbon calculation

- 50 trees cut down, measured and weighed
- Around 500 wood samples collected for carbon content analysis
- Technical guidelines on tree-based carbon calculation established

Sample plots measurement

- Design and develop carbon inventory that combined/integrated with biodiversity survey and peat survey
- Capacity development need for inventory crew members on tree identification, survey methods and wildlife survey

Landscape assessment

- Needs satellite imageries and remote sensing software
- Needs FMU Lalan Staff capacity development



Tree-based carbon calculation/ Allometric equation

- Tree measured on its diameter breast height, identified
- Tree felled down, cut again into short logs, sorted: stem, branches, twigs and leaves
- All parts weighed (wet weight), the samples collected
- Samples sent to the laboratory for carbon content calculation and its density
- Develop equation indicating correlation between dbh and biomass and its carbon content





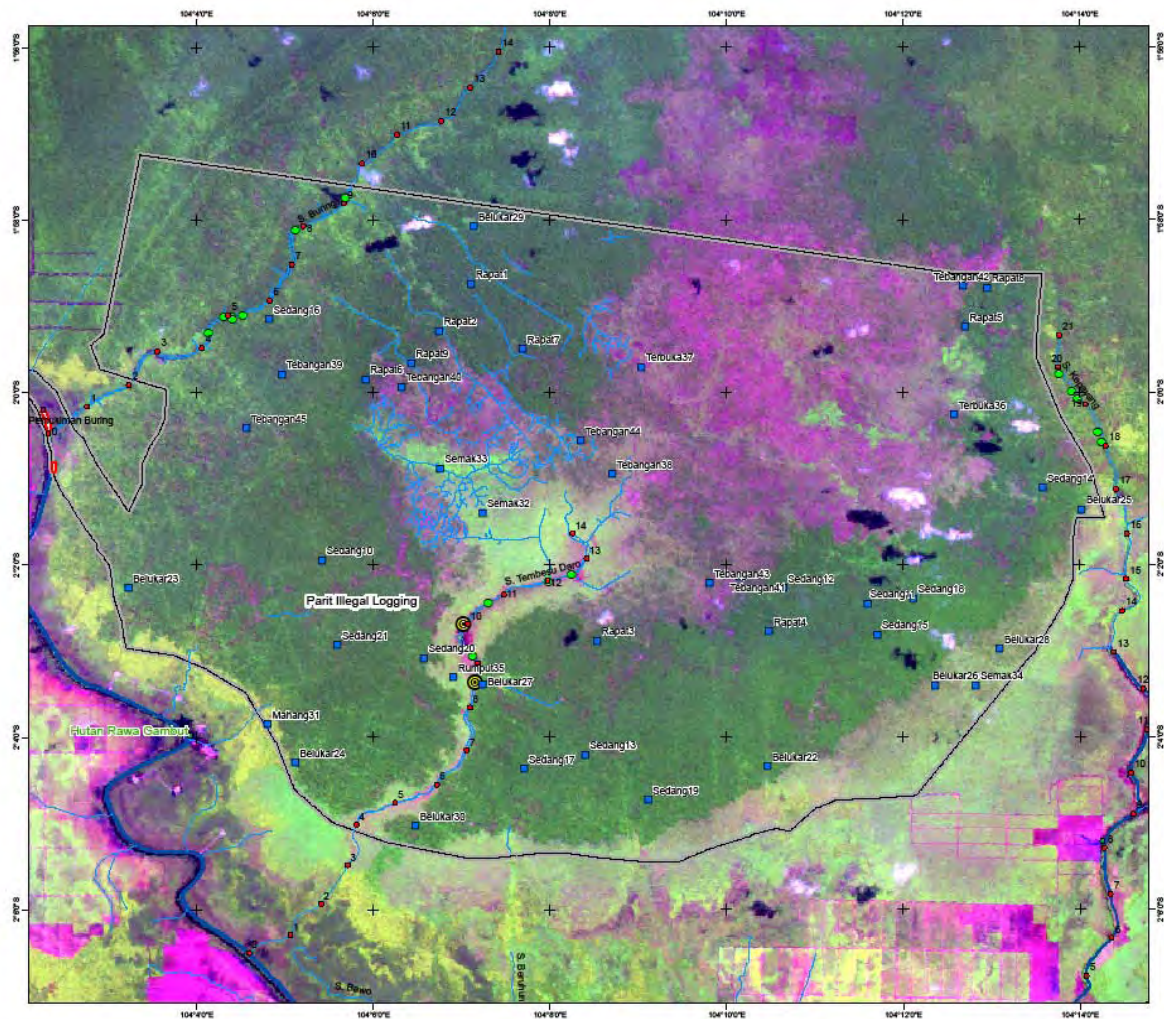
Sample Plots Measurements

- 45 random permanent sample plots established in the 24.000 Ha project area
- Two inventory groups trained and conducted carbon inventory
- Parallel with the above activities, peat depth drilling conducted and measured to update the peatdome volume data





Sample Plots Distribution

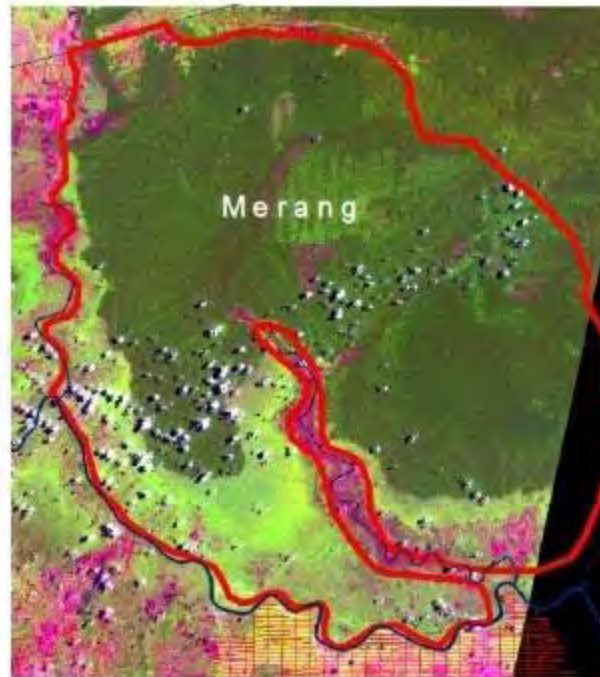




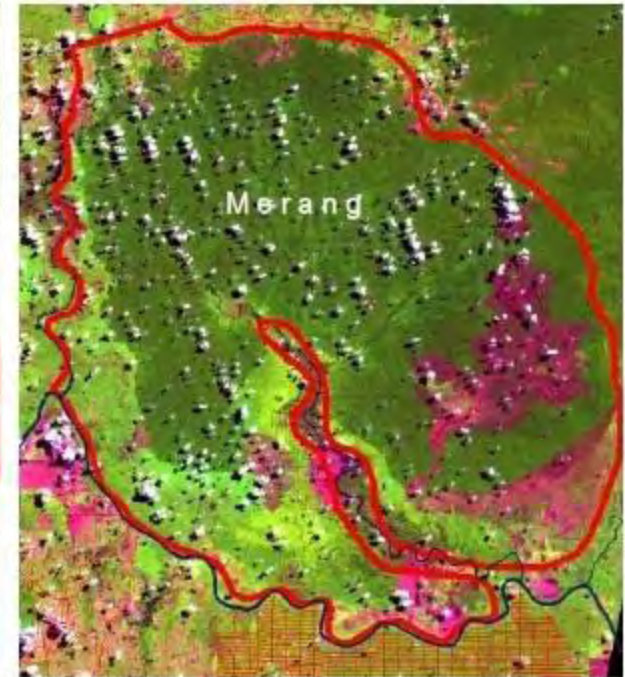
Trends of Forest Cover



1989



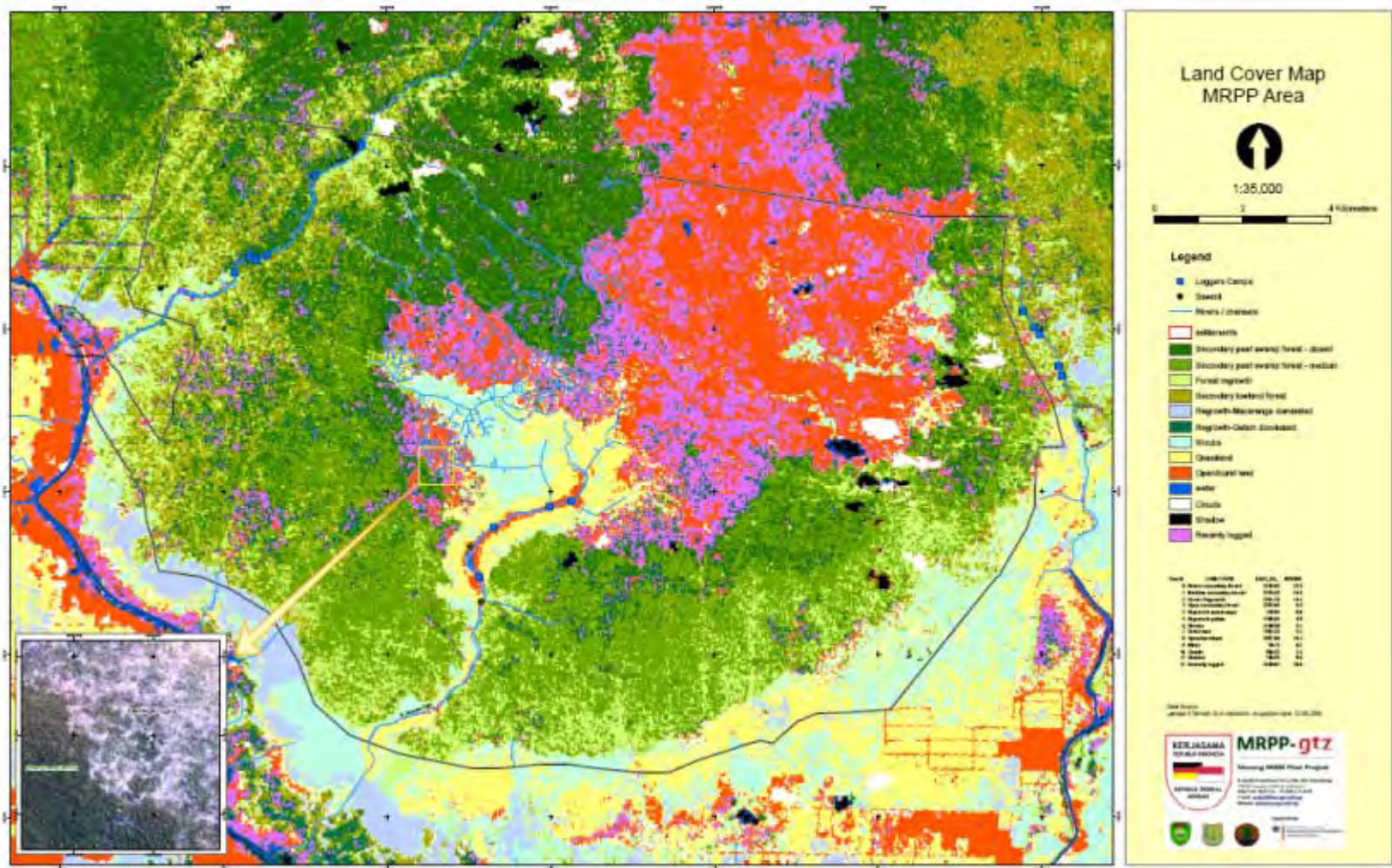
1999



2007



Landscape-based Carbon Stock Estimation





Biodiversity and Habitat Quality Monitoring





Community Forest Rangers establishment





Basic Training on Fire Prevention and Initial Attack for CFRs





Patrolling and Initial attack by Community Forest Rangers





Village Nursery Establishment

- Nursery establishment guideline & training
- Two nurseries established with capacity of 50.000 seedlings each
- Seedling collection as IGA for CFRs members





Canal Blocking by CFR members





River access blocking for illegal logging





Law enforcement by FMU/KPHP Lalan





Challenges ahead for future management of Merang Peat (dome) Swamp Forest

- **FMU/KPHP**

- Legislation and Regulation on FMU/KPHP
- Provincial and District commitment

- **REDD:**

- **International:**

- » COP 16 Mexico
- » Carbon market: Voluntary Vs Compliance

- **National**

- » Legislation and Regulation
- » Illegal logging
 - » It is possible to reduce illegal logging
 - » Multi stakeholders involvement and networking is a must at all level
 - » Political will needs to be strengthened further and law enforcement to be increased
 - » Certain amount of leakage will still occur and has to be defined for REDD
- » Prevention and initial attack for forest fire
- » *Benefit distribution*
 - » Carbon right issues: Gov, Investor, Local Communities
- » Seeking potential carbon investor



Thank You for Your Attention

MRPP

Jl. Jendral Sudirman KM 3,5 No 2837 Palembang

Telp/fax : 0711 – 353185/353176

E-Mail: project@merang-redd.org

Website: www.merang-redd.org