

# **PROGRESS REPORT APFP INDONESIA JANUARY-MARCH 2014**

**Presented in 10<sup>th</sup> Project Management Meeting  
Kuala Lumpur, Malaysia, 22 -24 April 2014**



ASEAN Peatland Forests Project | Indonesia Component  
[www.aseanpeat.net](http://www.aseanpeat.net)



GLOBAL ENVIRONMENT FACILITY  
INVESTING IN OUR PLANET



Enabling poor rural people  
to overcome poverty



**ASEAN Peatland Forests Project (APFP)**

Rehabilitation and Sustainable Use of Peatland Forests in Southeast Asia

# OUTLINE

- **Achievements Jan-March 2014**
- **Expenditure 2010 – 2014**
- **Tasks for April-June 2014**
- **Challenges**

# ACHIEVEMENTS



ASEAN Peatland Forests Project | Indonesia Component  
[www.aseanpeat.net](http://www.aseanpeat.net)



GLOBAL ENVIRONMENT FACILITY  
INVESTING IN OUR PLANET



Enabling poor rural people  
to overcome poverty



## ASEAN Peatland Forests Project (APFP)

Rehabilitation and Sustainable Use of Peatland Forests in Southeast Asia

# SUB OUTCOME I

## Capacity of human resources and institutions related to peatland management in Indonesia strengthened



- NPIC meeting, Palangkaraya, 14 February 2014 attended 10 person: preparation for APFP 2014 implementation and next Peatland Program;

LPIC meeting,  
Pekanbaru, 30 January  
2014 attended by 20  
person : preparation  
for APFP 2013  
implementation;



LPIC meeting, Palangkaraya, 13  
February 2014 attended by 20 person :  
preparation for APFP 2013  
implementation;



- Dissemination on National Strategy of Sustainable Peatland Management, Nangroe Aceh Darusalam Province 6 March 2014 , attended by 50 participants from various sectors and districts;



Handover of Peat Auger by Deputy Minister, Supported by APFP





Training on Sustainable Peatland Management at South Sumatera province, 11-13 March 2014, attended by 50 participants from various sectors and districts



Film documentation on best practices in sustainable peatland management in Riau, West Kalimantan, and Central Kalimantan

Training on Sustainable Peatland Management Dumai, Rohil, Siak, Bengkalis , Riau province,







Workshop on FDRS application for community, Pekanbaru-Riau, 2-3 December 2013, attended by 30 person of community fire brigade (MPA) from Rokan Hilir, Dumai, Bengkalis, Pelalawan, Kepulauan Meranti, and Indragiri Hilir



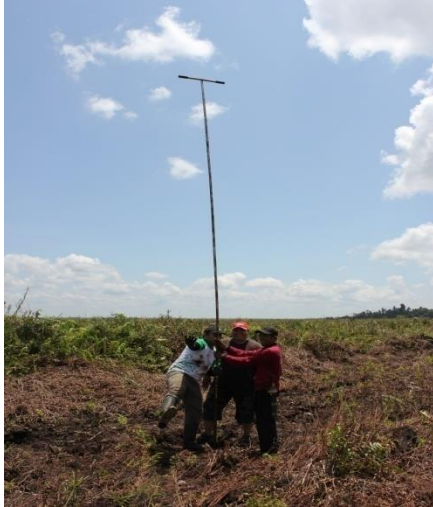
Participating in FDRS training in Malaysia, 4 participants from Indonesia (MoE, MoF, BMKG)





# SUB OUTCOME 2

**The degradation of peatlands in Indonesia minimized**



Mapping of priority site for rehabilitation in Kubu Raya District, West Kalimantan



Skala 1:650.000



 Batas Negara      Batas Kab/Kota  
 Batas Provinsi      Sungai

**Areal Rehabilitasi Lahan Gambut:**  
(Lindung Gambut Rusak/Terganggu; LC-2013:  
Hutan, Kebun Campuran, Mangrove, Rawa,  
Semak/Belukar, Tnh Terbuka, Tegalan/Ladang,  
Tubuh Air)

 **Areal Lindung Gambut (Baik/Alamiah)**

### Non Kesatuan Hidrologis Gambut (KHG)



2. Data Peta KHG Provinsi Kalimantan Barat,
3. Data Landsystem, RePProTT, Tahun 1990
4. Peta RBI, skala 1:25.000, Tahun 2000

Catatan: Peta ini bukan referensi resmi mengenai garis-garis batas administrasi nasional & internasional



# Incentive options for communities in Bengkalis

## Zero burning land preparation for pineapple plantation in Pelintung, Dumai

Total area : 6 Ha (2013 and 2014)

Coordinate: N 01°36'09.1" E 101°35'16.2"



# Pineapple Demonstration plot in Ds. Mumugo, Rohil & Tnj. Leban, Bengkalis planted in 2012





# Pineapple demonstration plot in Pelintung village, Dumai, Riau

Coordinate: N 01°36'09.1" E 101°35'16.2"





Pineapple demonstration plot in Tanjung Leban village, Bengkalis, Riau  
(Ibu Rubiati, the only woman of MPA).  
Coordinate: N 01°36'09.1" E 101°35'16.2"





# Pineapple demonstration plot in Mumugo, Rokan Hilir, Riau

Coordinate: N 01°36'52.0" E 101°14'21.2"



# **SUB OUTCOME 3**

**Key stakeholders working together to address rehabilitation and sustainable management of targeted peatlands in Riau and West Kalimantan**



# FGD on Partnership in Fire Prevention in Riau Province

## 27-28 February 2014

### Objectives:

1. To elaborate role and responsibility of government, private sectors, and community in fire prevention
2. To strengthen partnership among stakeholders in fire prevention

Commitment from Sinar Mas Forestry to provide :  
Mobile water bank, Android mobile phone for FDRS monitoring, fuel for fire patrol, to develop micro finance scheme.



# Demonstration plot of rubber and durian in Harapan Jaya village, Indragiri Hilir, Riau

Coordinate: N 00°26'29.5" E 102°46'22.8"





# Canal blocking demonstration plot for water management in Harapan jaya, village Indragiri Hilir, Riau.

Coordinate: S 00°27'54.2" E 102°47'84.0"





Fire control tools support : water pump, (10 unit), uniform (100 pcs), Helmet (100 pcs), and Mask (100 pcs) for MPA Pelintung and MPA Guntung (Dumai), MPA Tanjung Leban-Bengkalis and MPA Mumugo-Rokan Hilir





# **SUB OUTCOME 4**

**Sustainable peatland management related to biodiversity and climate change in selected peatlands benefiting local stakeholders**

# Pilot site for rehabilitation and conservation activities on priority peatland in Central Kalimantan

6 Hectare (4 Ha in 2013  
and 2 Ha in 2014  
combined  
Jelutung and Gaharu



# Pilot site of Agroforestry at Kalampangan village, Central Kalimantan

4 Hectare planted by Jelutung, Kelengkeng (longan) and Vegetables farm (still on going process)



# EXPENDITURE 2010 - 2014

Expenditure Category	Overall Budget	Previous expenditure 2010	Previous Expenditure 2011	Previous Expenditure 2012	Previous Expenditure Jan – Dec 2013	Current Expenditure Jan-Mar2014	Balance available for future periods
I Capacity Building	223.050,00	20.002,80	51.638,34	67.119,90	70.865,67	50.834,69	\$ (37.411,4164)
II Reduction in peatland degradation	260.500,00	0,00	38.641,60	49.249,97	11.0775,01	28.366,17	\$ 33.467,2401
III Management and Rehabilitation	296.000,00	29.732,22	53.999,14	80.347,65	79.246,54	2.835,53	\$ 49.838,9107
IV Partnerships	385.500,00	5.573,59	51.568,51	68.377,23	67.748,39	11.203,11	\$ 181.029,1638
V Project Management	34.950,00	4.460,55	5.716,85	14.213,13	85.52,81	752,32	\$ 1.253,3347
Bank ADM Riau	0,00	0,00	0,00	29,39	0,00	29,39	\$ -
<b>TOTAL</b>	<b>1.200.000,00</b>	<b>59.769,16</b>	<b>201.564,44</b>	<b>279.337,27</b>	<b>337.188,43</b>	<b>93.995,85</b>	<b>\$ 228.177,2328</b>

81 %



# Proposed Budget and Expenditure 2014

Outcomes	Budget 2014	Expenditure Jan-Mar 2014	Balance 2014
<b>I. Capacity Building for Sustainable Peatland Management</b>	\$60.046	\$50.834,697	\$9.211,303
<b>II. Reduction of Peatland Degradation</b>	\$68.595	\$28.366,179	\$40.228,651
<b>III. Integrated Management and Rehabilitation of Peatlands</b>	\$62.240	\$2.835,537	\$59.404,463
<b>IV. Multi-stakeholder partnerships</b>	\$128.807	\$11.203,116	\$117.604,364
<b>V. Project Management</b>	\$3.030	\$753,322	\$2.276,658
<b>TOTAL</b>	<b>\$322.718</b>	<b>\$93.992,850</b>	<b>\$228.177,233</b>

# Key remaining tasks April-June 2014

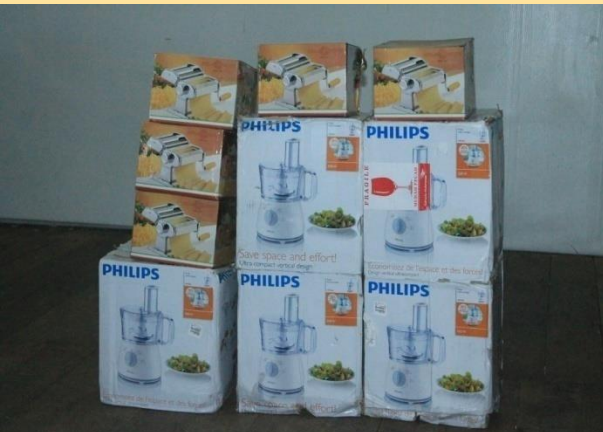
No.	Activities	Timeline	Status
1.	Incentives for communities in Danau Sentarum National Park, West Kalimantan (Fish product diversification)-training and tools support	April	Done
2.	Workshop on Early warning system and early fire suppression for community, Central Kalimantan	April	Done
3.	Workshop on Early warning system and early fire suppression for community, West Kalimantan	April	Not done yet
4.	Fire prevention training in Dumai, Rokan Hilir, Bengkalis	May	Not done yet
5.	Canal blocking in Harapan Jaya village, Indragiri Hilir, Riau	May	Not done yet
6.	Fire equipment support to Central Kalimantan, Riau, and West Kalimantan	May	Not done yet
7.	Peer learning for farmers from Riau, West Kalimantan to Central Kalimantan	May	Not done yet
8.	Publications	May	Not done yet



# Key remaining tasks April-June 2014

No.	Activities	Timeline	Status
9.	Fire prone area mapping	May	Not done yet
10.	Fire training modules	May	Not done yet
11.	Guidelines for Agroforestry in peatland	May	Not done yet
12.	FDRS signboard in Riau	May	Not done yet
13.	11th PMM and	June	Not done yet

# Incentive options for community in Danau Sentarum national Park, West Kalimantan: fish products diversification training





# Workshop on early warning system and early fire suppression for community, Central Kalimantan





On progress Pineapple Demonstration plot with 10 wells in 3 ha sized 2mx2mx4m, for water reservoir in dry season in Ds. Sepahat, Kec. Bukit Batu, Bengkalis. (Coordinat:e N 01°35'41.7" E 101°49'06.4")





Location plan of Agroforestry Demonstration plot mixed rubber and pineapple Harapan Jaya village, Tempuling sub district, Indragiri Hilir District (**Coordinate: S 00°26'11.4" E 102°47'10,8"**)



Proposed location for canal blocking Harapan Jaya village, Tempuling sub district, Indragiri Hilir District, SK-4, (Coordinate: S 00°26'11.0" E 102°46'24,1" Elv.15 m DPL)





Proposed location for canal blocking Harapan Jaya village, Tempuling sub district, Indragiri Hilir District, **SK04 (Coordinate: N 00°26'12.0" E 102°47'31,8" Elv.21 m DPL)**



# FDRS signboard for Bengkalis (Sepahat dan Tanj. Leban), Dumai (Pelintung and Guntung, and Rokan Hilir (Mumugo)





# Challenges for the Next Tasks

- Human resource allocation
- Dry season, possible fire season, esp. Riau

*Thank You*