

**Workshop on Design of the ASEAN Programme on Sustainable  
Management of Peatland Ecosystems (2014-2020)**

24 April 2014, Kuala Lumpur, Malaysia

**DRAFT AGENDA**

1. Welcome Remarks by ASEAN Secretariat
  2. Remarks by IFAD
  3. Remarks by European Commission
  4. Introduction on the Agenda and Programme
  5. Presentation on framework and targets and institutional mechanism for the ASEAN Peatland Programme 2014 – 2020
  6. Presentation on development of a framework for GEF6 support for ASEAN Peatland Programme
  7. Presentations by Potential Partners
  8. Open Discussion on various financing options for sustainable peatland management
    - a. Government finance (national budget allocations/ special programmes, trust funds)
    - b. Climate finance (REDD+, NAMA, Adaptation etc.)
    - c. Private sector finance (banking, plantations, insurance)
    - d. Community finance (micro-credit, grants, etc.)
  9. Group Discussions among:
    - a. Partners
    - b. AMS representatives/GEF Focal Points
  10. Feedback from Discussion Groups
  11. Conclusions
  12. Next Steps
  13. Closing
-

**Workshop on Design of the ASEAN Programme on Sustainable Management of Peatland Ecosystems (2014 – 2020)**

24 April 2014, Kuala Lumpur, Malaysia

<b>TENTATIVE PROGRAMME</b>	
07.45 – 08.30	<i>Registration</i>
08.30 – 08.35	1. Welcome Remarks by Dr. Raman Letchumanan, ASEAN Secretariat
08.35 – 08.40	2. Remarks by IFAD
08.40 – 08.45	3. Remarks by European Commission
08.45 – 08.55	4. Introduction of Agenda and Programme
08.55 – 09.25	5. Presentation on framework and targets and institutional mechanism for the ASEAN Peatland Programme 2014 – 2020
09.25 – 10.00	6. Presentation on development of a framework for GEF6 support for ASEAN Peatland Programme
10.00 – 10.15	<i>Refreshments</i>
10.15 – 11.15	7. Presentations by Potential Partners a. IFAD b. EU-EEAS c. ICCC
11.15 – 13.00	8. Open Discussion on various financing options for sustainable peatland management a. Government finance (national budget allocations/ special programmes, trust funds) b. Climate finance (REDD+, NAMA, Adaptation etc.) c. Private sector finance (banking, plantations, insurance) d. Community finance (micro-credit, grants, etc.)
13.00 – 14.00	<i>Lunch</i>
14.00 – 15.00	9. Group Discussions among: a. Partners b. AMS representatives/GEF Focal Points
15.00 – 16.00	10. Feedback from discussion groups
16.00 – 16.20	<i>Refreshments</i>
16.20 – 17.00	11. Conclusions
17.00 – 17.20	12. Next steps
17.20 – 17.30	13. Closing

## Annex 2: List of participants

### Workshop on Design of the ASEAN Programme on Sustainable Management of Peatland Ecosystems (2014-2020)

24 April 2014 – Pullman Kuala Lumpur, Malaysia

No.	Name	Designation	Location	Organisation/ Department
<b>ASEAN Secretariat</b>				
1.	Raman Letchumanan (PhD)	Head of Environment Division, ASCC Department/ Project Director	Indonesia	ASEAN Secretariat 70A Jl. Sisingamangaraja Kebayoran Baru, Jakarta 12110 Indonesia
2.	Natalia Derodofa	Senior Officer, Environment Division, ASCC Department	Indonesia	ASEAN Secretariat 70A Jl. Sisingamangaraja Kebayoran Baru, Jakarta 12110 Indonesia
3.	Riena Prasiddha	Technical Officer, Environment Division, ASCC Department	Indonesia	ASEAN Secretariat 70A Jl. Sisingamangaraja Kebayoran Baru, Jakarta 12110 Indonesia
<b>Regional Project Executing Agency (RPEA-APFP)/ Executing Agency (SEApeat) – Global Environment Centre</b>				
4.	Faizal Parish	Director of GEC/ Project Technical Director, RPEA	Malaysia	Global Environment Centre (GEC) 78, 2nd Floor, Wisma Hing, Jalan SS 2/72, 47300 Petaling Jaya, Selangor
5.	Fuad Shariff	Coordinator for Peatland Programme, GEC/ Regional Project Coordinator, RPEA	Malaysia	Global Environment Centre (GEC) 78, 2nd Floor, Wisma Hing, Jalan SS 2/72, 47300 Petaling Jaya, Selangor
6.	Lew Siew Yan (Serena)	Senior Technical Officer, Peatland Programme, GEC/ Regional Technical Officer, RPEA	Malaysia	Global Environment Centre (GEC) 78, 2nd Floor, Wisma Hing, Jalan SS 2/72, 47300 Petaling Jaya, Selangor
7.	Noor Azura Ahmad	Programme Officer, Peatland Programme, GEC/ Regional Technical Officer, RPEA	Malaysia	Global Environment Centre (GEC) 78, 2nd Floor, Wisma Hing, Jalan SS 2/72, 47300 Petaling Jaya, Selangor
8.	Tan Hui Sin	Programme Officer, Peatland Programme, GEC/ Regional Technical Officer, RPEA	Malaysia	Global Environment Centre (GEC) 78, 2nd Floor, Wisma Hing, Jalan SS 2/72, 47300 Petaling Jaya, Selangor
9.	Nagarajan Rengasamy	Senior Programme Officer, Forest and Biodiversity Programme, GEC	Malaysia	Global Environment Centre (GEC) 78, 2nd Floor, Wisma Hing, Jalan SS 2/72, 47300 Petaling Jaya, Selangor
10.	Brett Shields	Associate	Malaysia	Global Environment Centre (GEC) 78, 2nd Floor, Wisma Hing, Jalan SS 2/72, 47300 Petaling Jaya, Selangor
<b>Country representatives</b>				
11.	Kim Hon bt. Bangau	Senior Environment Officer	Brunei Darussalam	Dept. of Environment, Parks & Recreation, Ministry of Development
12.	Han Qin Yun	Landscape Architect (landscape management)	Brunei Darussalam	Parks & Recreation, Dept. of Environment, Parks & Recreation, Ministry of Development
13.	Mahmud bin Haji Yussof	CEO	Brunei Darussalam	HOB Centre Ministry of Industry & Primary Resources
14.	Sheikh Al-Idrus bin Sheikh Nikman	Fisheries Officer	Brunei Darussalam	Dept. Of Fisheries Marine Bio-D Centre
15.	Norlina bt. Nordin	Engineer	Brunei Darussalam	Dept. of Tech. Services/ Geotechnical & Geological Section, Ministry of Development
16.	Lailan Syaufina (PhD)	National Expert (NE) APFP-Indonesia, Lecturer of IPB	Indonesia	Dept. of Silviculture, Faculty of Forestry Bogor Agricultural University (IPB), Kampus IPB Darmaga, Bogor, 16680 Indonesia
17.	Wahyu Utami Tulis Wiyati	Head of Swamp Sub Division	Indonesia	Ministry of Environment Jln. D.I. Panjaitan Kebon Nanas Kav. 24, Jakarta Timur 13410 Indonesia
18.	Hisam Setiawan	Project Coordinator	Indonesia	Mitra Insani Foundation Jln Pembangunan II, No. 8 Labuh Baru, Pekanbaru, Riau, Indonesia 28291

19.	Mitta Ratna Djuwita	Director of Multilateral Div., Bureau for Planning & Int. Cooperation	Indonesia	Ministry of Env. Jln. D.I. Panjaitan Kebon Nanas Kav. 24,Jakarta Timur 13410 Indonesia
20.	Devita Safitri Nur Akbar	Operation Officer of GEF Indonesia, Bureau for Planning & Int. Cooperation	Indonesia	Ministry of Env. Jln. D.I. Panjaitan Kebon Nanas Kav. 24,Jakarta Timur 13410 Indonesia
21.	Khonekeo Kingkhambang	Deputy Director	Lao PDR	ASEAN Cooperation on Env. Div. Ministry of Natural Resources and Environment (MoNRE)
22.	Hamdan b. Napiah	National Coordinator (NC) APFP-Malaysia, Senior Principal Assistant Director	Malaysia	Forest Department of Peninsula Malaysia (FDPM) Jalan Sultan Salahuddin, 50660 Kuala Lumpur, Malaysia
23.	Balu Perumal	NE APFP-Malaysia, Head of Conservation Div.	Malaysia	Malaysian Nature Society
24.	Siti Madzlina Salahudin	Assistant Secretary	Malaysia	Biodiversity & Forestry Management Division , Ministry of Natural Resource & Environment
25.	Sann Lwin	Secretary (Finance)	Myanmar	FREDA Suite (707), 7th Floor, MWEA Tower, 288-290, Shwedagon Pagoda Road, Dagon Township, Yangon, Myanmar
26.	Aung Aung Lay	Assistant Director	Myanmar	Resources and EIA Division Building No 53, Nay Pyi Taw
27.	Armida Andres	NC APFP-Philippines, Supervising Ecosystems Mgt. Specialist, Protected Areas and Wildlife Bureau (PAWB)	Philippines	Dept. of Environment & Natural Resources (DENR), Quezon Avenue, Diliman, Quezon City, Philippines
28.	Makabenta Corazon Horca	Supervising Ecosystems Mgt. Specialist, Protected Areas and Coastal Zone Mgmt. Service	Philippines	DENR, Regional Office 8, Sto. Nino. Extension, Tacloban City, Leyte, Philippines (Regional Focal Person, APFP Leyte Sab-a Basin Peatland Pilot Site)
29.	Jaime Gelidon Ubanos	Chief PAWD/ Regional Peatland Focal Person for Agusan Pilot Site	Philippines	Dept. of Environment & Natural Resources (DENR), Region 13 Ambago, Butuan City, Philippines
30.	Joy Mendoza Navarro	Person in-charge, Special Ecosystems Management Section	Philippines	Caves, Wetlands & other Ecosystems Div. Bio-D Mgmt Bureau, DENR, Ninoy Aquino Parks & Wildlife Center Compound North Avenue, Diliman, Quezon City 11000 Philippines
31.	Seow Hui Ching	Executive	Singapore	International Relations Department 40 Scotts Road #19-00 Environment Building S228231
32.	Prasert Sornsathpornkul (PhD)	Director, Int. Cooperation Div., Planning & Information Office	Thailand	Dept. of National Parks, Wildlife and Plant Conservation 61 Phahonyothin Rd. Laadyao, Chatuchak, Bangkok 10900 Thailand
33.	Chatchaya Buaniam	Forestry Technical Officer	Thailand	Dept. of National Parks, Wildlife and Plant Conservation 61 Phahonyothin Rd. Laadyao, Chatuchak, Bangkok 10900 Thailand
34.	Surang Phornprasit	Forestry Technical Officer	Thailand	Dept. of National Parks, Wildlife and Plant Conservation 61 Phahonyothin Rd. Laadyao, Chatuchak, Bangkok 10900 Thailand
35.	Praparat Reungjumroon	Forestry Technical Officer	Thailand	Dept. of National Parks, Wildlife and Plant Conservation 61 Phahonyothin Rd. Laadyao, Chatuchak, Bangkok 10900 Thailand
36.	Nonglak Sopakayoung	Environmentalist	Thailand	Office of Int. C cooperation, GEF OFP Secretariat, Ministry of Natural Resources & Env.
37.	Nguyen Thi Thanh Tram	NC Vietnam, Senior Official	Vietnam	Dept. of Int. Cooperation & Sc, Technology No 10, Ton That Thuyet, Cau Giay, Hanoi, VN

38.	Le Phat Quoi (PhD)	NE Vietnam, Head of Natural Resources Division, Institute for Environment and Natural Resources National University	Vietnam	142, To Hien Thanh, Dis 10, Ho chi Minh City, Vietnam
39.	Nguyen Dieu Linh	Officer (GEF OFP)	Vietnam	Int. Cooperation Dept. Ministry of Natural Resources & Env. 10 Ton That Thuyet Street, Cau Giay District, Hanoi, VN
<b>Partner</b>				
40.	Sunae KIM	Portfolio Officer, Environment and Climate Change, Asia and the Pacific Division. GEF Project Management	Italy	IFAD, Via Paolo di Dono 44, 00142 Rome, Italy
41.	Muamar Vebry	Programme Manager, Development Cooperation	Indonesia	EU Delegation to Indonesia, Brunei Darussalam and ASEAN, Intiland Tower, 16th Floor, Jl. Jend Sudirman 32, 10220 Jakarta, Indonesia
42.	Htain Lin	Senior Program Manager	Korea	International Cooperation ASEAN-ROK Forest Cooperation Secretariat
43.	Eli Nur Nirmala Sari (PhD)	Cluster Coordinator	Indonesia	Peatland & Peatland Mapping Indonesia Climate Change Center (ICCC)
44.	Dr. Hans Ulrich Klingshirn	Resident Representative	Indonesia	Hanns Seidel Foundation Menara Cakrawala 9th Fl. Jl. MH. Thamrin No.9 Jakarta
45.	Paul Lemaistre	Manager, Global Forest Watch	Indonesia	World Resources Institute (WRI) Jalan Bakti 24, Jakarta
46.	Canecio Munoz	Environment Director	Indonesia	Environment & Stakeholder Relations Sinarmas Forestry
47.	Terhorst, Heinrich	Strategic Area Manager Green Economy	Indonesia	GIZ FORCLIME Deutsche Gesellschaft fuer Internationale Zusammenarbeit
48.	Pollisco Filiberto Jr, Arnoco	Policy & Research Specialist	Philippines	Program Development & implementation ASEAN Centre for Bio-Diversity 3/F, ERDB Bldg., Forestry Campus, College, Laguna, Philippines
49.	Dr. Dicky Pardomuan Simorangkir	Int. Expert on Climate Change	Philippines	Bio-Diversity & Climate Change Project GIZ, 3/F, ERDB Bldg., Forestry Campus, College, Laguna, Philippines
50.	Tang Men Kon	Head-In-Charge	Malaysia	Plantation Sustainability & Quality Management, Sime Darby Plantation Level 3A, Oasis Ara Damansara
51.	Nur Aida Ab. Ghani	SE	Malaysia	Plantation Sustainability & Quality Management, Sime Darby Plantation Level 3A, Oasis Ara Damansara
52.	Hari Ramalu Ragavan	Programme Manager	Malaysia	Energy & Environment Cluster UNDP
53.	Murugadas Loganathan	Climate Change & Energy Attaché	Malaysia	British High Commission, Kuala Lumpur
54.	Lee Mei Fong	Head of Impacts	Malaysia	Roundtable on Sustainable Palm Oil (RSPO)
55.	Rory Padfield (PhD)	Senior Lecturer	Malaysia	Universiti Teknologi Malaysia
56.	Joy Jacqueline Pereira (PhD)	Professor	Malaysia	Universiti Kebangsaan Malaysia
57.	Alexander Kiew Sayok (PhD)	Research Fellow/ Assoc. Professor	Malaysia	Institute of Biodiversity and Environment Conservation, UNIMAS 94300 Kota Samarahan, Sarawak Malaysia

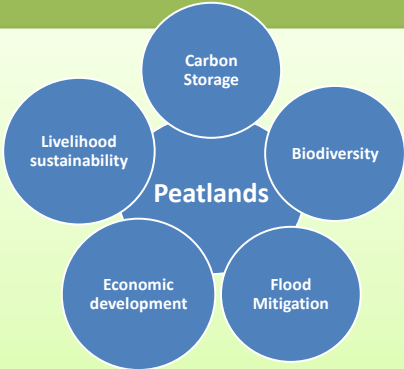


**Workshop on Design of the ASEAN Programme  
on Sustainable Management of Peatland  
Ecosystems (SMPE)  
(2014 -2020)**

24 April 2014, Kuala Lumpur, Malaysia

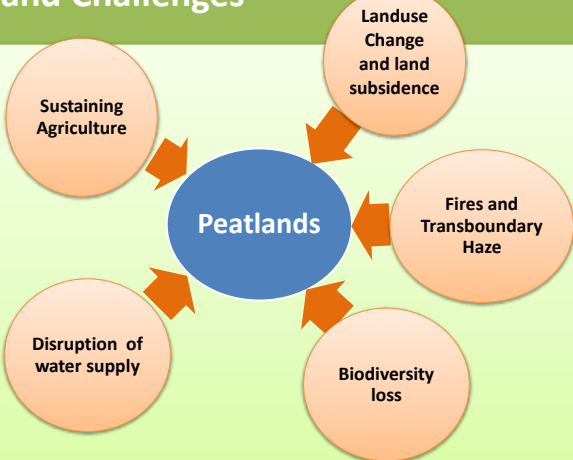


**Peatland Values**



ASEAN is host to 60% of the global tropical peatlands



**Peatland Challenges**




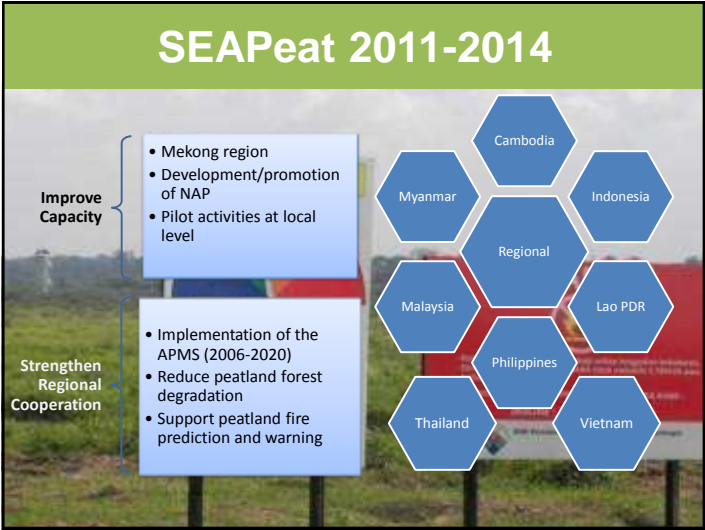
**APFP 2010-2014**

**Objectives**

- Capacity Building
- Integrated Management
- Partnership with Community and Plantation Sector
- Fire Prevention







### 9th Meeting of the Conference of the Parties (COP-9) to the ASEAN Agreement on Transboundary Haze Pollution

25 September 2013, Surabaya, Indonesia

- The Ministers noted the **significant progress and achievements** of the two projects on Rehabilitation and Sustainable Use of Peatland Forests in Southeast Asia (ASEAN Peatland Forests Project/**APFP** - funded by IFAD-Global Environment Facility) and the **SEApeat** Project (funded by European Union) which will conclude in 2014.
- The Ministers supported the **Programme on Sustainable management of Peatland Ecosystem in ASEAN (2014 to 2020)** based on the lessons learned from these two projects in order to achieve the goals and objectives of the ASEAN Peatland Management Strategy by the year 2020.
- The Ministers agreed to establish a **Task Force on Peatlands** to assist the Committee in monitoring and supporting the implementation of the APMS

### 16<sup>th</sup> Meeting of the Sub-Regional Ministerial Steering Committee on Transboundary Haze Pollution (16<sup>th</sup> MSC)

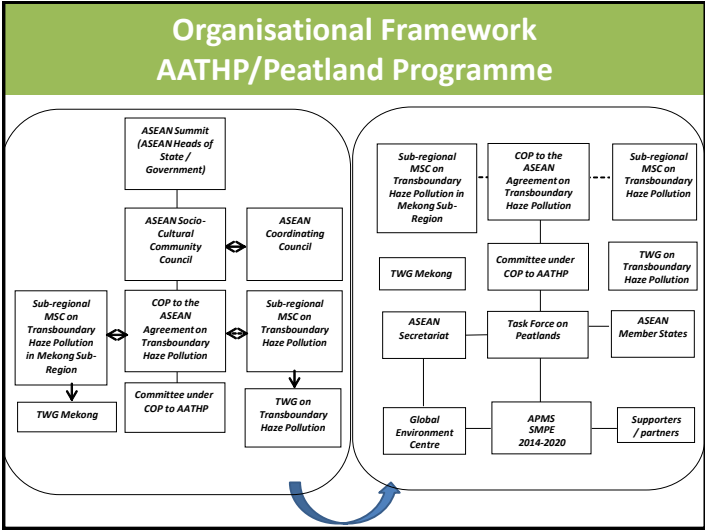
2 April 2014, Brunei Darussalam

- The Ministers emphasised that sustainable management of fire prone areas especially peatlands remains a high priority for prevention of fires and smoke haze, as well as the mitigation of the impact of climate change.
- The Ministers noted the substantive progress in the development of the ASEAN Programme on Sustainable Management of Peatland Ecosystems 2014-2020 and the encouraging response and support from ASEAN Dialogue Partners and other partners, and key stakeholders such as the plantation companies towards the Programme.
- The Ministers renewed their commitment to coordinate the implementation of this regional Programme through national level support and commitment.

### Six SMPE Targets

1. All peatland areas identified and inventorized;
2. Zero-burning uniformly practiced and controlled-burning only in exceptional cases to prevent any uncontrolled wildfires on peatlands, and eliminate any widespread smoke haze;
3. Fire prone sites rehabilitated by focusing on root causes of fire,
4. Peatlands sustainably managed, sustainable livelihoods enhanced, and sustainable economic use mainstreamed;
5. Peatlands conserved to contribute to significantly reduced emissions of greenhouse gases and increased peatland biodiversity in the region;
6. APMS and NAPs implemented; national and regional capacity enhanced

SMPE and ASEAN Community Pillars		
ASEAN Economic Community	ASEAN Socio-cultural community	ASEAN political community
Agriculture Forestry Fisheries Plantations Natural resources	Environment Biodiversity Climate change Transboundary haze Water resources	Bilateral relations International relations Transboundary Crime and Impacts



1. Peatland assessment/inventory

**Target 2020:**  
*All peatland areas identified and inventorized*

Cambodia – Unique Mangrove Peatland

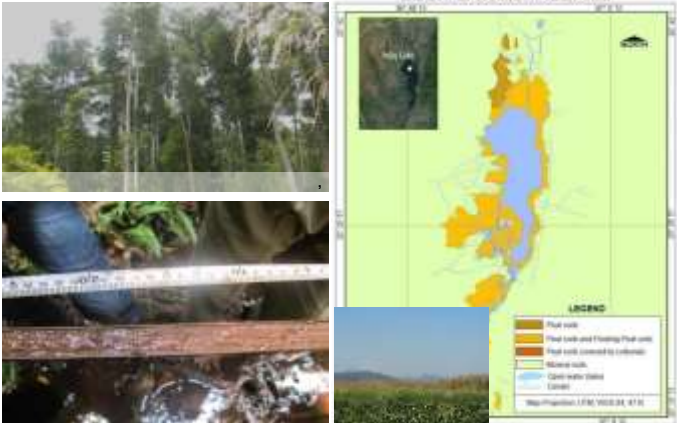
2010 – unknown → 2013 – 7,300ha

The figure includes a map of Cambodia with peatland areas highlighted in yellow and orange. To the right of the map are three photographs: the top one shows a lush green mangrove forest, the middle one shows a wide, flat, dark peatland area, and the bottom one shows a group of people sitting on a bench, possibly engaged in ecotourism or community activities.

7,306.61 ha of unique “mangrove peatland” was identified in one coastal province, Koh Kong  
Partly Protected in wildlife reserve. Potential Ecotourism development with community



Newly Discovered Peatlands, Myanmar



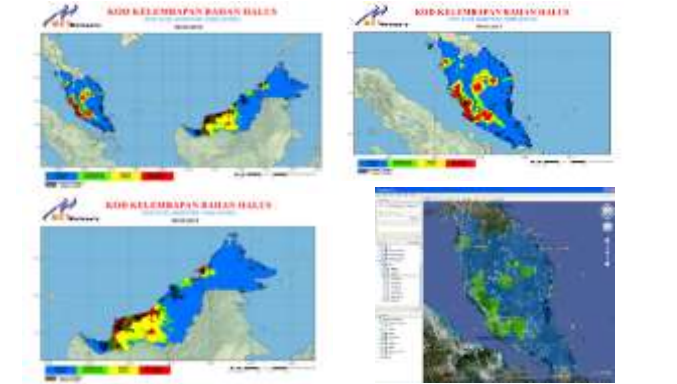
Peat swamp forest, Kauk Ye Island

Inle Lake area = 9,105.94 ha

2. Fire Prediction, Prevention and Mitigation

Target 2020:  
Prevent any uncontrolled wildfires on peatlands, and  
eliminate any widespread smoke haze

<http://www.met.gov.my/fdrs/>



- Zoom to Peninsular & East Malaysia
- Google Map
- Peatland area

Harapan Jaya, Riau – Village fire prevention Regulation adopted

Village FINES for Fire damages:  
1 oil palm tree US\$35  
1 rubber tree US\$10



Pineapple cultivated through zero burning techniques in four villages in Indonesia



Alternative land clearing and development options



3. Rehabilitation of fire prone sites

**Target 2020:**  
*Fire prone sites rehabilitated by focusing on  
root causes of fire*

Fire spreading along abandoned logging canal on 1st August 2012



Natural Recovery of forest 18 months after Blocking of canals at same site to raise water table



Recovery of degraded Forest five years after blocking drains



4. Promote Sustainable Livelihood

**Target 2020:**  
*Peatlands sustainably managed, sustainable livelihoods enhanced, and sustainable economic use mainstreamed*

Sorjan Farming in Indonesia







5. Conservation

**Target 2020:**  
*Peatlands conserved to contribute to significantly reduced emissions of greenhouse gases and increased peatland biodiversity in the region*



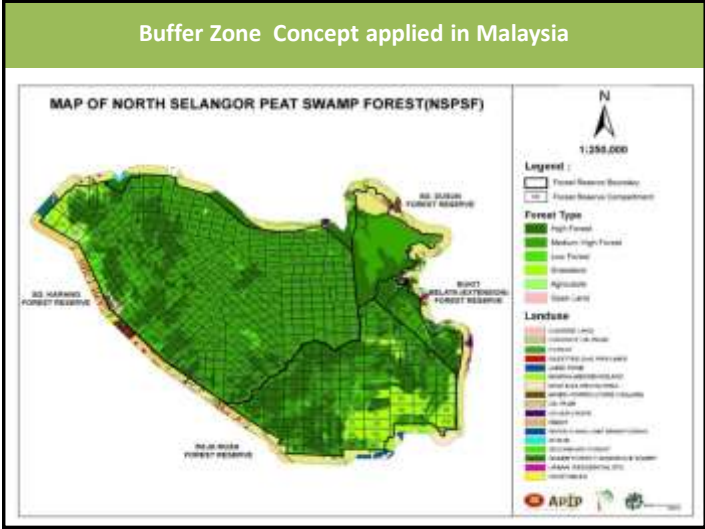
### Buffer Zone Management Green Contract System in Vietnam



US\$ 40,000 Project funding has been used to support the community livelihoods development of 51 households in 400ha buffer zone of UMTNP (750 USD for each household).

Four models applied: *Fruit trees, Vegetables, livestock and crops*

**Impact on peatland reduced, fires prevented**



## 6. Governance and Capacity Building

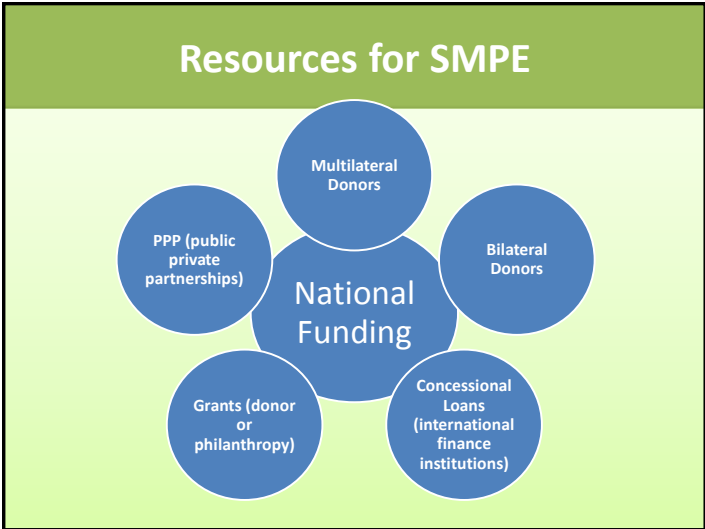
**Target 2020:**  
**APMS and NAPs implemented; national and regional capacity enhanced**

National Action Plans		
Country	Status	Remarks
Indonesia	Completed in 2006 and revised in 2012	Revised strategy published in November 2012. Key issues to be included in Government Regulation on Peatland
Malaysia	Completed in 2010	Endorsed by Cabinet January 2011 and promoted.
Philippines	Completed in 2009	Incorporated into National Wetland Strategy and Action Plan; and the Philippine Development Plan (2011-2016)
Vietnam	Final Draft completed	Awaiting final stake-holders consultation and planned approval by Cabinet.
Brunei Darussalam	NAP finalised	NAP finalised. Further review with relevant stakeholders will be held to take into account recent developments
Cambodia	Peatland assessment underway	
Lao PDR	Peatland assessment underway	Consultation started in August 2012
Myanmar	Peatland assessment underway	NAP planned after assessment is complete
Singapore	Existing peatlands zoned within Natural Reserve	Focus on supporting issues at regional level
Thailand	Draft prepared	Draft awaiting government approval



Indicative Budget

- Indicative budget for the programme (2014-2020) is:
  - USD 100 million from national budget allocations/ investments
  - USD 25-30 million from external partners.



Potential Funding Sources			
Sources	Types of Fund	Financing type	Remarks
National Governments	National budget for development & operation costs		
Bilaterals	Country Programmes	Grants	CIDA
Bilaterals	Regional Programmes		CIDA, DGIS, USAID, GIZ
GEF	GEF-6 allocation	Grants	According to GEF strategy
EU	EU Environmental Funds	Grants	According to EU strategy
EU	EU ASEAN Regional Funds	Grants	Priorities 2014-2018 under development
IFAD	adaptation fund for climate change	Grants	According to IFAD criteria
IFAD	Country Programmes		Micro-credit for community action
MDBs	National loans or regional/ national studies	Grants and loans	ADB, WB
Private Sector	Support for sustainable peatland management		companies in plantations, agriculture, ecotourism etc

Country priorities ( to be completed)											
SMPE Targets	Bru	Cam	Ind	Lao	Mal	Myn	Phil	Sin	Thai	VN	Reg
1											
2											
3											
4											
5											
6											

Example Project Description				
Project Name	Enhancing Prevention and Control of Peatland Fires			
Project Location	Country: Malaysia	Prov/ state: Selangor Pahang Sarawak	Dist:	
Lead Agency	NRE			
Partners	District Authority FDPJ JAS, BOMBA, UPEN, MMD, MKN (PMO), JMG, JPS.			
Duration	2014– 2020			
Project Objective	Minimise peatland fires through effective prevention and response.			
Project Activity	Joint SOP by Agencies (NRE, BOMBA, MMD and State) Enhancing warning and prevention measure at local level. Improve rapid response to fire control Enhanced local capacity for fire prevention and control Development of Cooperative Fire management plans Demonstration and pilots at state level in states with peatland fire problems (Selangor, Pahang and Sarawak)			
Linkage to APMS/NAPP/ ASEAN Programme Targets	ASEAN target 2 NAPP Objective 6.1 (reduce occurrence of peat fire and associate haze)			
Indicative budget	RM70 million			
Indicative funders	JAS, NRE, BOMBA, FD, MMD (agencies or special budget)			
Status	RM 20 million available for 2014-2015 in special JAS budget and annual budget of agencies			

Next Steps

Apr-May 2014

• Develop Country and Regional Project or activity concepts

Jun-Dec 2014

• Develop Proposals with and confirm support from potential partners

Jul 2014-Dec 2015

• Detailed design projects/programmes

Jan 2015-Jun 2020

• Implement projects





ASEAN Peatland Programme

SMPE: Sustainable Management of Peatland Ecosystems in ASEAN 2014-2020

Options for GEF support

24 April 2014  
Kuala Lumpur, Malaysia

ASEAN Targets

- 1. All peatland areas in ASEAN **identified and inventoried**
- 2. **Zero-burning** uniformly practiced and controlled burning only in exceptional cases to prevent any uncontrolled wildfires on peatlands, and eliminate any widespread smoke haze
- 3. Fire prone sites **rehabilitated** by focusing on root causes of fire
- 4. Sustainable management of all peatlands, enhance **sustainable livelihoods** and sustainable economic use
- 5. Peatlands conserved to contribute to significantly **reduced emissions of greenhouse gases** and increased **peatland biodiversity** in the region
- 6. APMS and NAPs implemented: national and regional **capacity** enhanced

STAR (System for Transparent Allocation of Resources) under GEF-5

Country	GEF-5 (2010-2014)				
	Total (USD)	Biodiversity	Climate Change	Land Degradation	Peatland Size
GLOBAL	4.25 billion	1.2 B	1.35 B	400 M	
Indonesia	87,910,000	54,170,000	29,670,000	4,070,000	20,695,000 ha
Philippines	35,830,000	25,960,000	8,830,000	1,040,000	64,500 ha
Thailand	31,630,000	9,050,000	20,100,000	2,480,000	63,800 ha
Malaysia	30,310,000	14,660,000	14,240,000	1,410,000	2,588,900 ha
Viet Nam	27,510,000	12,120,000	13,890,000	1,500,000	15,000 ha
Myanmar	15,350,000	6,720,000	7,120,000	1,510,000	23,000 + ha
Laos	10,860,000	6,130,000	3,260,000	1,490,000	19,100 ha
Cambodia	7,280,000	3,850,000	2,210,000	1,220,000	7,000 ha
CEILING		10%	11%	10%	
FLOOR		1,500,000	2,000,000	500,000	

GEF-6 Eligible Countries and Focus

Country	ASEAN Target	GEF Focal Areas
Regional	Inventories (Target 1); Capacity building (Target 6) Fire early warning and Haze monitoring ( target 2)	CC-1; SFM-1, SFM-4 ; LD-3
Indonesia	Zero-burning (Target 2); Rehabilitation (Target 3)	CC-2; SFM-3 ; LD-3
Malaysia	Zero-burning (Target 2); Rehabilitation (Target 3)	CC-2; SFM-3; LD-3
Philippines	Sustainable livelihoods (Target 4); Biodiversity (Target 5)	CC-2; BD-4
Thailand	Biodiversity (Target 5)	BD-4
Cambodia	Biodiversity (Target 5)	BD-4
Laos	Sustainable livelihoods (Target 4)	CC-2;
Myanmar	Biodiversity (Target 5)	BD-4
Viet Nam	Sustainable livelihoods (Target 4); Biodiversity (Target 5)	CC-2; BD-4

## Next steps

- Confirm priorities of GEF eligible countries to include in SMPE programme and agreement to allocate resources under GEF 6.
- Develop GEF Programme framework Document with indicative countries/allocation.
- Confirm if countries wish to have joint proposal (regional/sub regional) or free standing proposal .
- Indicative concepts identified
- Submission/approval of PFD
- Submission of Project PIFs within 6 months.

# IFAD

24 April 2014  
Kuala Lumpur, Malaysia

## What does IFAD do?



In 2014



## Vision Statement

- To play a central role in realizing the post-2015 global agenda aiming to end poverty through a universal shift to sustainable and more equitable development.

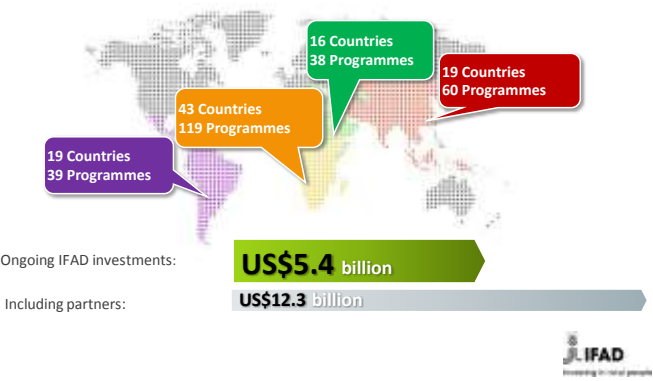


## Area of expertise and current focus

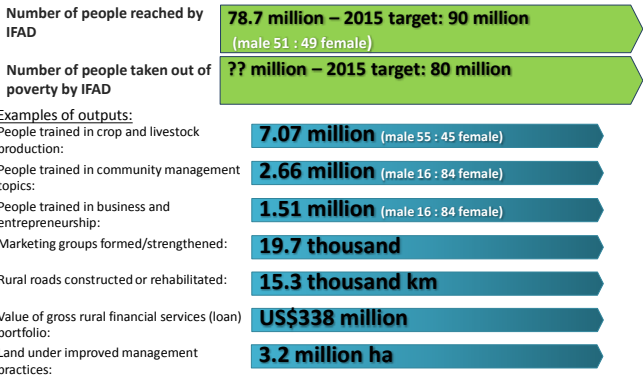
- Sustainable management of *natural resources*
- Supporting *rural communities* in addressing climate change, access to agricultural technologies and productive rural services, inclusive financial services, poor rural people’s participation in value chains, rural enterprise development and non-farm employment
- Access to *technical and vocational skills*
- Supporting *rural producers’ organizations*



### Achievements and results – ongoing programmes (as of 2012)

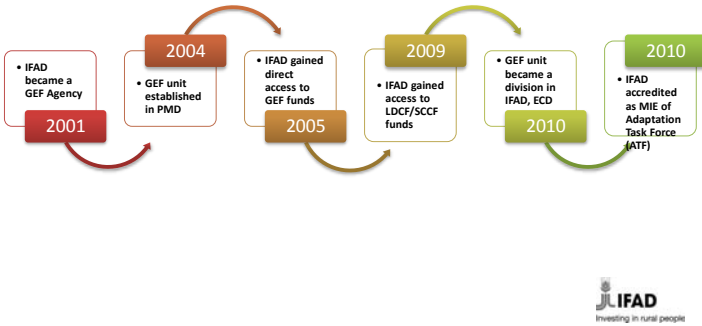


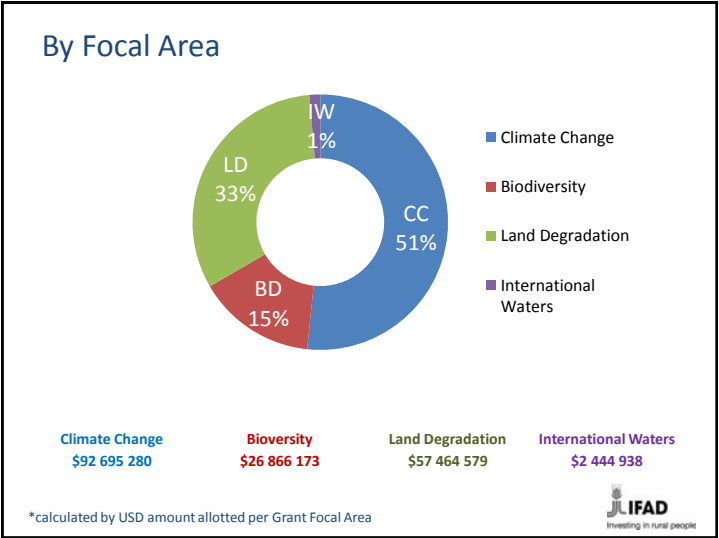
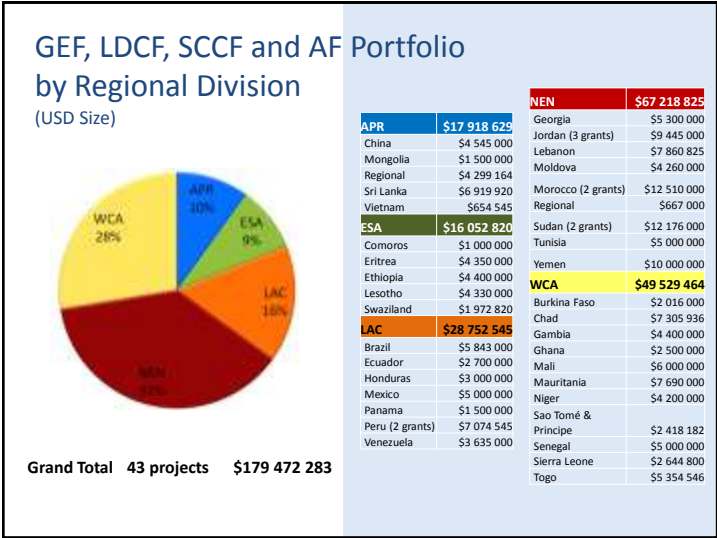
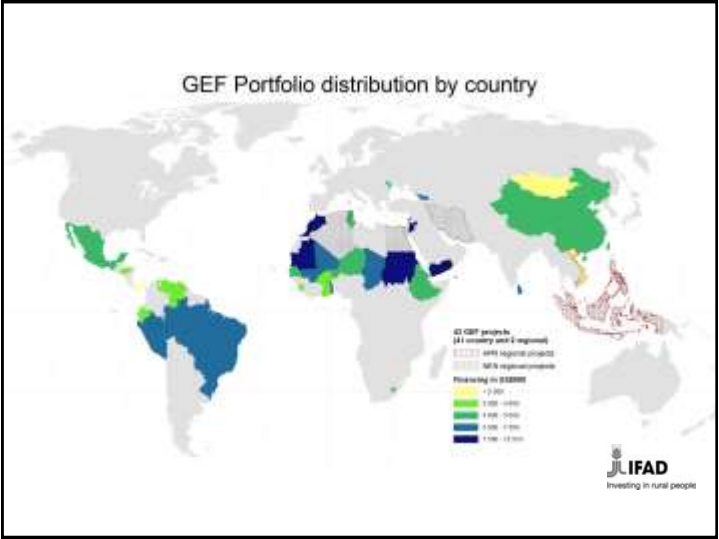
### IFAD9 Results: Key outputs of ongoing IFAD projects



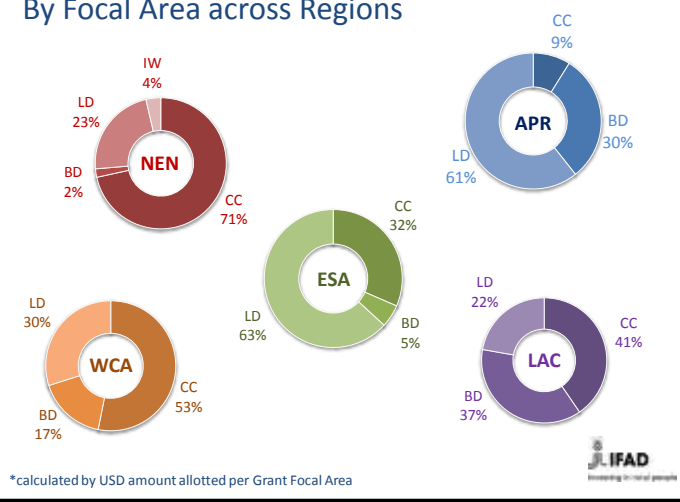
### IFAD GEF portfolio overview March 2014

### IFAD and the GEF brief timeline





By Focal Area across Regions

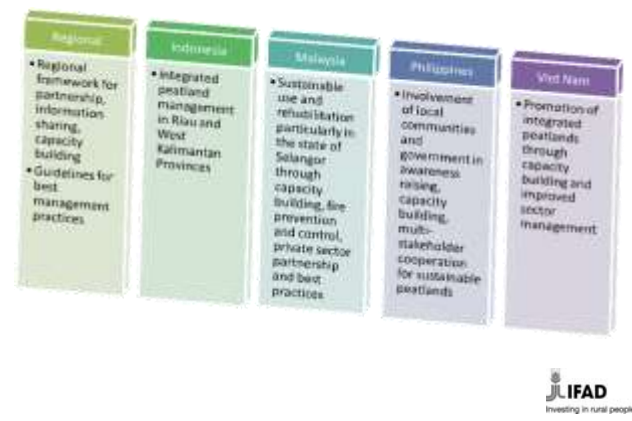


ASEAN Peatland Project 2010-2014

**GOAL:** To promote the sustainable management of peatlands in South East Asia to sustain local livelihoods to reduce poverty, reduce risk of fire and associated haze and contribute to global environmental management, particularly biodiversity conservation and climate change mitigation.

**Objectives:** To demonstrate, implement and upscale integrated management of peatlands in South East Asia through mainstreaming and improved governance, strengthened capacity and increased awareness, enhanced multi-stakeholder partnerships, and innovative approaches to maintain and rehabilitate identified critical peatlands.

ASEAN Peatland Project 2010-2014



Latest GEF project: Sustainable Management of Peatland Ecosystems in Indonesia (2014-2018)

Components

- 1) Capacity building for implementation of national action plans and strategies, and APMS
- 2) Reduction of peatland degradation and GHG emissions through i) fire prediction, monitoring and warning systems, ii) peatland hydrological unit maps, iii) Fire/haze free village programme, iv) assessment of potential GHG emissions
- 3) Integrated sustainable management demonstrated:  
i) partnership between private sector, government and community for sustainable management and ii) best practices



## EU-ASEAN Development Cooperation (2014 – 2020)

*Workshop on Design of  
the ASEAN Programme on Sustainable  
Management of Peatland Ecosystems*

Muamar Vebyri  
Programme Manager – Climate Change, Disaster Management and Border Management  
Delegation of the European Union to Indonesia, Brunei Darussalam and ASEAN

## EU – ASEAN Cooperation 2014 - 2020

- **In adherence with ASEAN priorities set in the ASC Blueprint**
- **Capitalize upon ASEAN ongoing successful programmes and existing structures (i.e. AISEC, SEAPEAT, AHPN and ACB)**
- **Built upon previous and/or existing EU support and /or collaboration with ASEAN**

## EU – ASEAN Cooperation 2014 - 2020

- Bandar Seri Begawan / Brunei ASEAN-EU Plan of Action 2013 - 2017 defines broad areas of EU – ASEAN cooperation.
- Core cooperation principles and focal sectors have been agreed at the Joint Cooperation Committee (January 2014); the 3 (three) Focal Sectors are :
  1. **Connectivity through sustainable and inclusive economic integration and trade:** Building on successful past cooperation, the activities in the area of institutional connectivity will contribute to the completion of the ASEAN Economic Community.
  2. **Climate change and disaster management:** Activities under this area will contribute to objectives of the ASEAN Socio-Cultural and Political and Security Communities. This area will contribute to the 20% target for climate related finance.
  3. **A comprehensive Dialogue Facility:** The facility will build on and extend the successful Regional EU ASEAN Dialogue Initiative (READI). It will be flexible to be able to cover subjects of mutual interest across all the pillars of the ASEAN Community, including human rights and security issues. Complementarity and coordination will be ensured with the actions financed by the various non-DCI instruments.
- Detailed Areas of Cooperation for each Focal Sector confirmed at the bilateral meeting between Commissioner Andris Piebalgs and Deputy-Secretary-General Madam Alicia Dela Rosa Bala in March 2014 in the Margin of EU Development Day.
- Possible activities are the result of a pre-identification missions conducted in the course of 2013.

## Funding for Future EU – ASEAN Cooperation 2014 - 2020

- Funding for 2014 – 2020 is allocated under the Development Cooperation Instrument (DCI):
  - DCI Geographic: ASEAN funding under the Regional Asia MIP 2014 – 2020, EUR 170 million
  - DCI Thematic: Global Public Goods and Challenges (GPGC), EUR 15 million (indicative)
  - The Envelope of the 2014 – 2020 MIP was officially handed over by EU Commissioner Andris Piebalgs to ASEAN Deputy-Secretary-General Madam Alicia Dela Rosa Bala in March 2014.
- Joint Planning Tools: EU ASEAN Joint Programme Design Teams (JPDT) include the Sectoral Bodies shape concrete programmes.
  - JPDT is tested means to conceptualise concrete cooperation programmes, e.g. Human Rights, Statistics and Integration Monitoring and Education Cooperation

Concertized Action: EU – ASEAN Cooperation on  
Climate Related Programme (2014 – 2020)

- **Component 1:** Support to SEAPeat Phase – 2: Sustainable Peatland Management (as carbon sink) and combating transboundary haze pollution (Indicative amount EUR 20 million)
- **Component 2:** Support to ASEAN Centre for Biodiversity (ACB) and ASEAN Heritage Parks (DCI Thematic, indicative amount EUR 10 - 15 million)
- **Component 3:** Support to Environmentally Sustainable and Climate Resilient ASEAN Cities (Indicative amount EUR 15 million)

Support to SEAPeat Phase – 2

- Title: Support to SEAPeat Phase – 2: Sustainable Peatland Management (as carbon sink) and combating transboundary haze pollution
- **Indicative amount: EUR 20 million**
- Objective: Improving sustainable peatland management to mitigate the adverse impact of climate change in ASEAN and managing risk of transboundary regional haze.
- Specific targets may comprise the following:
  - All peatland areas identified and inventoried
  - Zero-burning protocol to be uniformly practiced and controlled-burning only in exceptional cases to prevent any uncontrolled wildfires on peatlands, and eliminate any widespread smoke haze
  - Fire prone sites rehabilitated by focusing on root causes of fire
  - Peatland sustainably managed, sustainable livelihoods enhanced and sustainable economic use mainstreamed
  - Peatland conserved to contribute to significantly reduced emissions of greenhouse gases and increased peatland biodiversity in the region
  - ASEAN Peatland Management Strategy (APMS) and National Action Plans (NAPs) implemented as well as national and regional capacity enhanced

Support to SEAPeat Phase – 2

- Pre-identification Study conducted at the end of 2013 by Dr. Jamal Gawi
- Report presented to ASEC and EU HQ in early 2014 with positive remarks
- In-depth Identification and Formulation mission scheduled to take place in June – October 2014 in two phases:
  - **Phase 1)** Identification of intervention areas and work scoping. This will entail production of Identification Fiche.
  - **Phase 2)** Formulation of the action and design of the projects. This will entail production of Action Fiche.
- Term of Reference shared with ASEC for review and feedback (17/04/2014)
- 3 companies will be requested to submit three separate offers consisting of a financial part and the CVs of the consultants
- ASEC would be part of the Evaluation Committee for the selection of the Company to undertake the abovementioned task
- Evaluation to be conducted on the second week of May; exact date will be confirmed

Identification Fiche?

Identification Fiche is expected to include (but not necessarily be limited to):

- Background and scene setter
- Objective, purpose and results
- Simple indicators
- Method and approach
- Stakeholder analysis and complementary actions
- ASEAN Secretariat challenges and foreseen role in the new actions
- Project justification and leverage
- Modalities of implementation
- Risk analysis
- Recommendations



## Formulation Fiche?

Formulation Fiche is expected to include (but not necessarily be limited to):

- Clear Rationale for intervention
- Lessons learned from previous/parallel actions
- Stakeholders, Donors and ASEAN coordination
- Objectives, expected results and activities
- Indicators
- Risks and assumptions
- Crosscutting issues, notably gender and vulnerable groups concerns and strategies
- Methods of implementation
- Budgets and calendars
- Communication and visibility

## Indicative Timeline

- EU – ASEAN JPDT tentatively scheduled by end of June 2014
- EU proposes JPDT to take place in the Philippines (ACB)
- These will allow the EU to formally mobilise new action in early 2015.


## Indicative Timeline

PHASE 1 - IDENTIFICATION	
Identification mission to include desk study, site visits, interviews, meetings, data analysis and verification, focused group discussions etc...Travel to Indonesia on 25 May for briefing on 26 June at EU Delegation then continue mission to other selected ASEAN Countries.	25 May – 12 June 2014
Submission of mission inception report	28 May 2014
Preparation of Identification Fiches	13 – 19 June 2014
Submission of IFs to EU Delegation and de-briefing	20 June 2014
Departure of team from Indonesia to The Philippines, preparation of workshop + logistics	21 - 24 June 2014
Joint Planning and Development Team Workshop (JPDT)	25 June 2014
Los Banjos, The Philippines Stock-taking from workshop, compiling of results, finalisation of IFs and submission to EU Delegation	26 - 27 June 2014
Departure of the team from The Philippines to home-base	28 June 2014
Review by EU DEL, DG DEVCO and ASEAN Secretariat QSG 1 review and decision	Early July 2014 Mid July 2014
Amendment of Identification Fiches in line with QSG 1 review + comments from EU DEL, DEVCO and ASEAN Secretariat or unconditional approval of IF and beginning of formulation phase	End July 2014

## Indicative Timeline

PHASE 2 - FORMULATION	
Formulation mission (stock-taking, lessons learned from existing projects, projects detailed design, modalities of intervention, timeframes, budgeting, risk analysis, travel and consultations with ASEAN MS etc...Travel to Indonesia on 3 August, briefing at EU DEL on 4 August)	4 – 27 August 2014
Preparation of Action Fiches	28 August -10 September 2014
Travel to Indonesia	11 September 2014
Submission of AFs to EU Delegation de-briefing and departure of team from Indonesia	12 September 2014
Review by EU DEL, DG DEVCO and ASEAN Secretariat QSG 2 review and decision	Mid-September 2014 Late September 2014
Amendment of Action Fiches in line with QSG 2 review and comments from ASEAN or unconditional approval of AFs	End September 2014
Final report writing	29 September – 10 October 2014
Submission of final report, end of contract	10 October 2014





Peatland and Peatland Mapping Cluster Program:  
Towards Sustainable Peatland Management

Indonesia Climate Change Center

www.iccc-network.net

Workshop on Design of the ASEAN Programme on Sustainable Management of Peatland Ecosystems (2014-2020)

April 24, 2014, Kuala Lumpur, Malaysia

About Indonesia Climate Change Center (ICCC)

2010

President Susilo Bambang Yudhoyono and President Obama have agreed on the cooperation between Gol and USG within 'US-Indonesia Comprehensive Partnership'

One of the activities proposed by President Susilo Bambang Yudhoyono and President Obama:  
Formation of climate change study center in Indonesia

30 September 2011

Series of coordination meeting facilitated by both Kemenko Kesra and DNPI in developing ICCC's institutional and program framework  
↓  
(Stated by Menko Kesra and DNPI's Chairman in the DNPI Coordination Meeting, chaired by the President)

11 October 2011

LoI of cooperation between DNPI and USFS has been signed

Research Clusters of ICCC:

1) Peatland and Peatland Mapping (PPMC)  
2) MRV

3) Low Emission Development Strategies (LEDS)  
4) Climate Resilience

Workshop on Design of the ASEAN Programme on Sustainable Management of Peatland Ecosystems (2014-2020)

Bridging Science to Policy

**Objective:**  
to produce scientific analyses in support of policy and action to deal with greenhouse gas emissions from peatland

**Activities:**

- An expert group under the Peatland and Peatland Mapping cluster
- Focused consultation series to empower the research cluster
- Develop a policy briefing paper and public outreach documents on Peatland work
- Develop a longer-term program of work on Peatland and Mapping

Background

Emission reductions will be achieved largely by devising policies targeting the Land-Use, Land-Use Change, and Forestry (LULUCF) sector. Peat and LULUCF related emissions are by far the largest contributors to Indonesia's current and expected future emissions, and represent the largest opportunities to abate emissions (DNPI, 2011)

Different understanding and assumption about peat

Different methodology

Variety of data:  
peat area, peat depth

Support 'One Map Initiative'

Reliable Peatland Mapping

Robust Policy

Sustainable Peatland Management

Standardize 'Peatland Definition'

Develop Peatland Mapping Methodology

Workshop on Design of the ASEAN Programme on Sustainable Management of Peatland Ecosystems (2014-2020)

1

Strategic Approach

1. Convene

➤ Expert Meeting, Focus Group Discussion

2. Commission

➤ Research

3. Conversation

➤ International Indonesia Peatland Conversation (IIPC)

4. Communication

➤ Inter Ministerial and Key Stakeholders

Workshop on Design of the ASEAN Programme on Sustainable Management of Peatland Ecosystems (2014-2020)

Output

1. Policy Memo: Peatland Definition (which has been adopted by Indonesian National Standards (SNI) Peat Mapping at 1:50,000 scale);

2. Synthesis Report IIPC 2013;


3. Synthesis Report IIPC 2014;

4. Peatland Mapping Methodology recommendation;

4. Peatland Definition and Peatland Mapping Methodology Assessment;

5. Pelalawan & Katingan Districts peat depth maps (support the Moratorium map);

6. Research Brief 2013.



Workshop on Design of the ASEAN Programme on Sustainable Management of Peatland Ecosystems (2014-2020)

Pilot Sites



**Sumatera**  
Pelalawan District, Riau Province  
Siak Kecil, Riau Province  
Dumai, Riau Province  
Singkil and Kluet, NAD Province  
Bengkalis, Riau Province,  
Kampar Peninsula, Riau Province,  
Muaro Jambi, Jambi Province



**Kalimantan**  
Katingan District, Central Kalimantan Province  
Pulang Pisau, Central Kalimantan Province  
Ketapang, West Kalimantan Province  
Tanjung Puting and surroundings,  
Nunukan, North Kalimantan Province  
Sentarum, West Kalimantan Province  
Pontianak, West Kalimantan Province  
EMRP North, Central Kalimantan Province

Workshop on Design of the ASEAN Programme on Sustainable Management of Peatland Ecosystems (2014-2020)

Budget

Total = USD 7,670,000

❑ ICCC proposes a three years work program, which includes the continuation and expansion of ongoing efforts, and new initiatives that support GOI needs for improved peatland policy and management

❖ 2011 – 2014 : Modality

❖ 2014 – 2016 : Scaling-up

❑ As of June 2014, USG funding finished, ICCC is seeking funding to scale up the activities as follows,

❖ Verification of technology to support improved peatland mapping and scaling up to regional levels (duration: 3 years)

❖ GHG assessment and inventory from peatland in pilot districts

❖ Vertical Data Integration (VDI) feasibility study and implementation in pilot districts

❖ Public and private policy engagement to increase the sustainability of peatland management by communities and smallholders

❖ Capacity building with the time frame of 3 years

❖ International Indonesia Peatland Conversation 2015, 2016, 2017

❖ Satellite-based ground water table data for estimating net CO2 emissions from peatland by installing 45 water loggers in 15 pilot sites

Workshop on Design of the ASEAN Programme on Sustainable Management of Peatland Ecosystems (2014-2020)

Thank you

eli@iccc-network.net

Annex		
No	Activity	Budget (USD)
1	Verification of technology to support improved peatland mapping and scaling up to regional levels (duration: 3 years)	1,500,000
2	GHG assessment and inventory from peatland in pilot districts	1,350,000
3	Vertical Data Integration (VDI) feasibility study and implementation in pilot districts	1,500,000
4	Public and private policy engagement to increase the sustainability of peatland management by communities and smallholders	1,000,000

Workshop on Design of the ASEAN Programme on Sustainable Management of Peatland Ecosystems (2014-2020)

Annex		
No	Activity	Budget
5	Capacity building with the time frame of 3 years	720,000
6	International Indonesia Peatland Conversation 2015, which will be held in February of 2015, 2016, 2017	450,000
7	Satellite-based ground water table data for estimating net CO2 emissions from peatland by installing 45 water loggers in 15 pilot sites	1,150,000

Total budget = USD 7,670,000

Workshop on Design of the ASEAN Programme on Sustainable Management of Peatland Ecosystems (2014-2020)