



# 8<sup>th</sup> APFP Project Management Meeting

## Recent Peatland Fire and Haze Issues in Indonesia, Singapore and Malaysia

9<sup>th</sup> July 2013

Manila, Philippines

Funded by:



Enabling poor rural people to overcome poverty

PROJECT:



GLOBAL ENVIRONMENT FACILITY  
INVESTING IN OUR PLANET

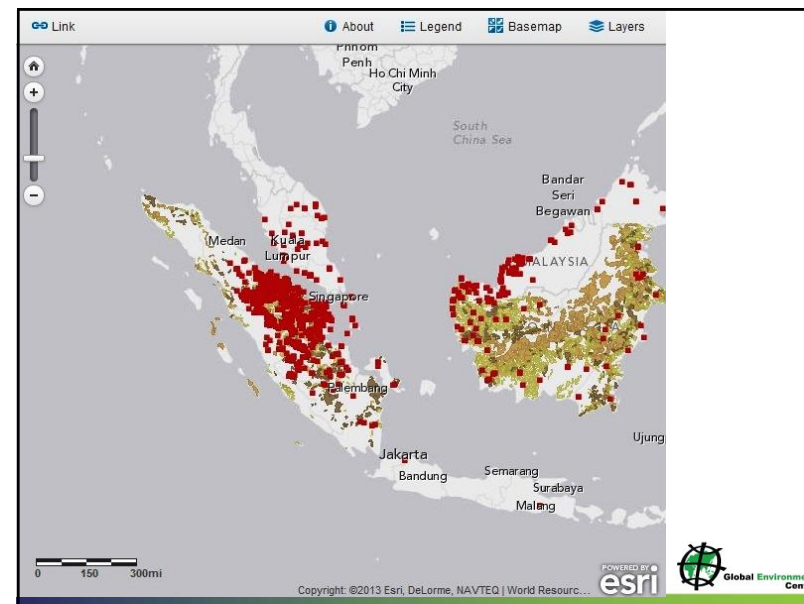
RPEA:

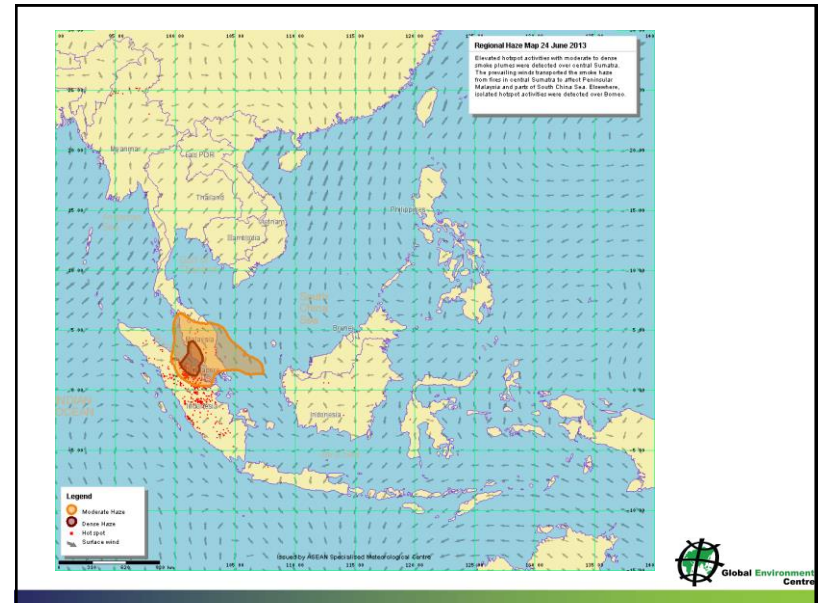
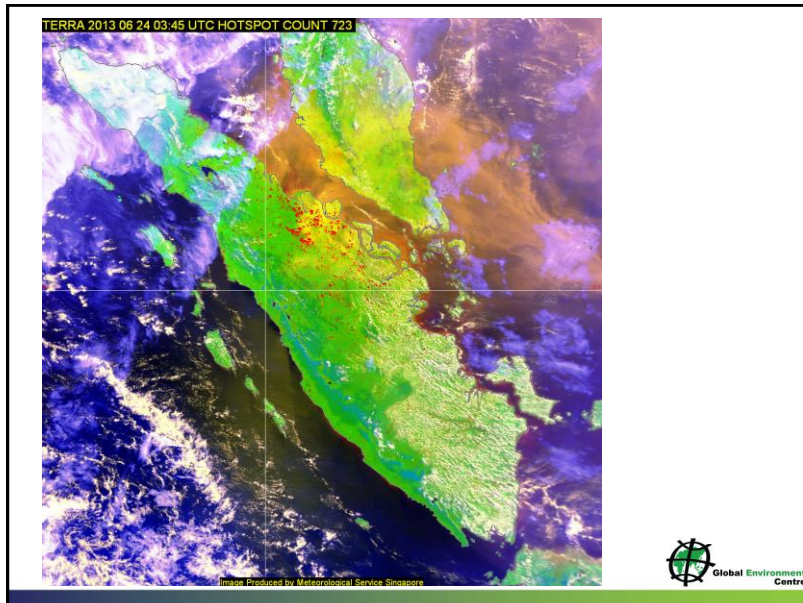


ASEAN Peatland Forests Project (www.aseanpeat.net)



Global Environment Centre



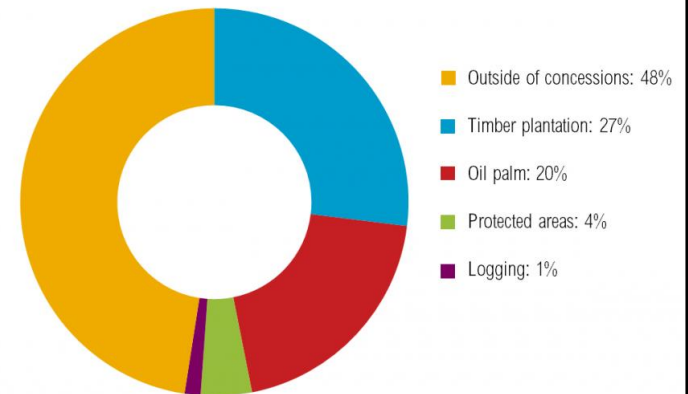


## Air Quality

- Singapore 401
- Muar, Johor, Malaysia 746
- Klang, Selangor, Malaysia 490
- Dumai Riau 800
- Serious Health and economic impacts
- Emergency Declared in Muar
- Schools closed in Selangor and Kuala Lumpur



FIRE ALERTS BY LAND USE AREA, INDONESIA.  
June 12-20, 2013



17 TIMBER CONCESSIONS WITH THE HIGHEST SHARE OF FIRE ALERTS

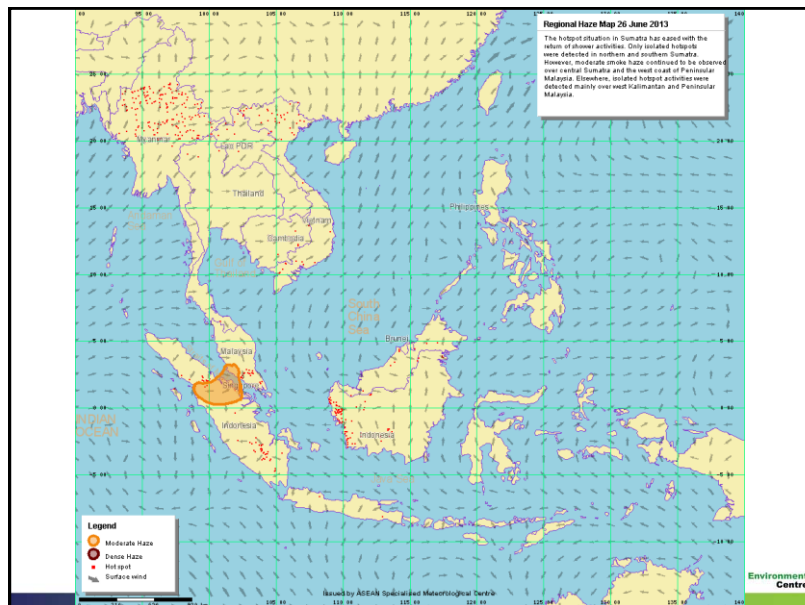
NAME	GROUP, AFFILIATE, OR MAIN BUYER	NUMBER OF FIRE ALERTS (21-23 JUNE 2013)
PT. SUMATERA RIANG LESTARI	Raja Garuda Mas / Royal Golden Eagle Affiliated	143
PT. ARARA ABADI	Sinar Mas Forestry	127
PT. RUAS UTAMA JAYA	Sinar Mas Forestry	104
PT. RIMBA ROKAN PERKASA	Sinar Mas Forestry	97
PT. SERAYA SUMBER LESTARI	Raja Garuda Mas / Royal Golden Eagle	57
PT. BINA DAYA BINTARA	Raja Garuda Mas / Royal Golden Eagle	51
PT. LESTARI ASRI JAYA	Barito Pacific Group	37
PT. SATRIA PERKASA AGUNG (SK 244)	Sinar Mas Forestry	34
PT. SAKATO PRATAMA MAKMUR	Sinar Mas Forestry	32
PT. RIAU ANDALAN PULP & PAPER	Raja Garuda Mas / Royal Golden Eagle	31
PT. BINA DAYA BENTALA	Sinar Mas Forestry Affiliated	25
DEXTER TIMBER PERKASA INDONESIA	Sinar Mas Forestry	24
PT. MITRA HUTANI JAYA	Sinar Mas Forestry	18
PT. SUNTARA GAJAPATI	Sinar Mas Forestry	18
PT. BUKIT BATU HUTANI ALAM	Sinar Mas Forestry	16
PT. WAKA KACHO PERKASA	-	13



10 PALM PLANTATIONS WITH THE HIGHEST SHARE OF FIRE ALERTS

NAME	GROUP, AFFILIATE, OR MAIN BUYER	NUMBER OF FIRE ALERTS (21-23 JUNE 2013)
PT. SURYA DUMAIAGRINDO	SURYA DUMAI GROUP	79
PT. JATIMJAYA PERKASA	WILMAR GROUP	50
PT. GUNTUNG HASRAT MAKMUR	SAMBU GROUP	49
PT. ROKAN ADIRAYA PLANT	ROKAN GROUP	30
PT. TEGUHKARSA WANALESTARI	-	21
PT. SIAK SERAYA	SIK RAYA GROUP	20
PT. ROKAN ERA SUBUR	ROKAN GROUP	14
PT. RIAU SAKTI TRANSMANDIRI	SAMBU GROUP	12
PT. SINDORA SERAYA (BLOK I)	PANCA EKA GROUP	11
PT. KARYATAMA BAKTI MULIA	SURYA DUMAI GROUP	10






## Action by GEC/RPEA on Haze


- Linked up with NGOs, private sector and government agencies in Malaysia, Singapore and Indonesia
- Initiated a Stop the Haze Campaign on 23 June as a way for the Malaysian public to get involved - request for volunteers and contributions
- Meeting with Sime Darby and Sinar Mas Forestry to review link between plantations and Haze
- Working with RSPO secretariat to check on the response of five RSPO members that have been accused by Indonesia of having fires in their concession areas
- 25 June: Provision of suggestions to Ministry of Natural Resources and the environment, Malaysia on options for discussion with Ministry of environment Indonesia.
- Meeting with Ministry of Environment in Jakarta 26<sup>th</sup> June – review of situation and action required
- Meeting with Ministry of Public Works on 27<sup>th</sup> June
- Participation in workshop on 27 June officiated by president of Indonesia to reduce deforestation related to Plantations .





TIME TO STEP UP AND MAKE A CHANGE  
**STOP THE HAZE**

- Survey team in Riau 27 June-3 July to visit the key areas with large scale fires to assess what immediate actions can be taken.
- Providing equipment and funds to local community for fire fighting in Riau
- Appeal for volunteers to support fire monitoring in Malaysia.
- Advising Indonesian government on fire control strategy
- Interviews to Al-jazeera and BFM, Star, Sinar Harian and Sin Chew etc on the haze.
- Working with World Resources Institute to fine tune their maps and analyses of hotspots versus plantation companies.
- Website/blog to update public on haze


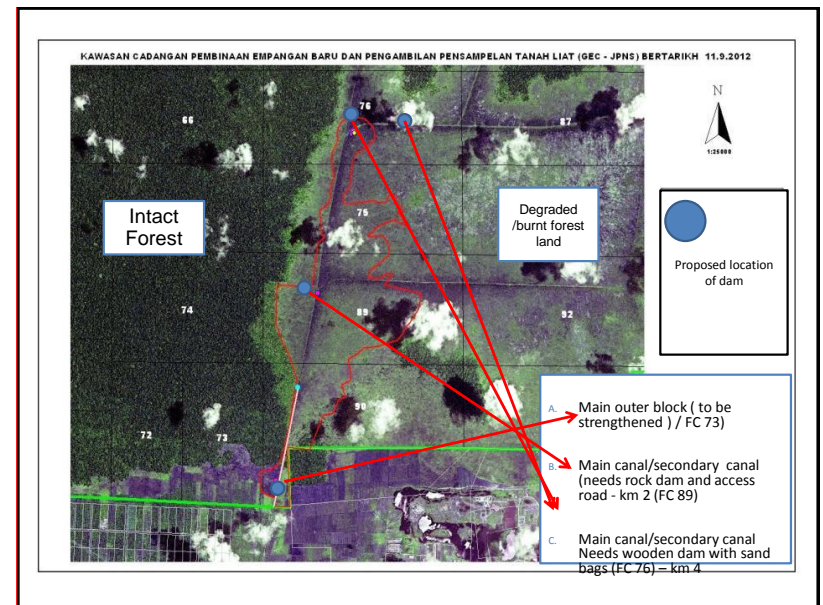


## Fire Situation and prevention Raja Musa Forest Reserve

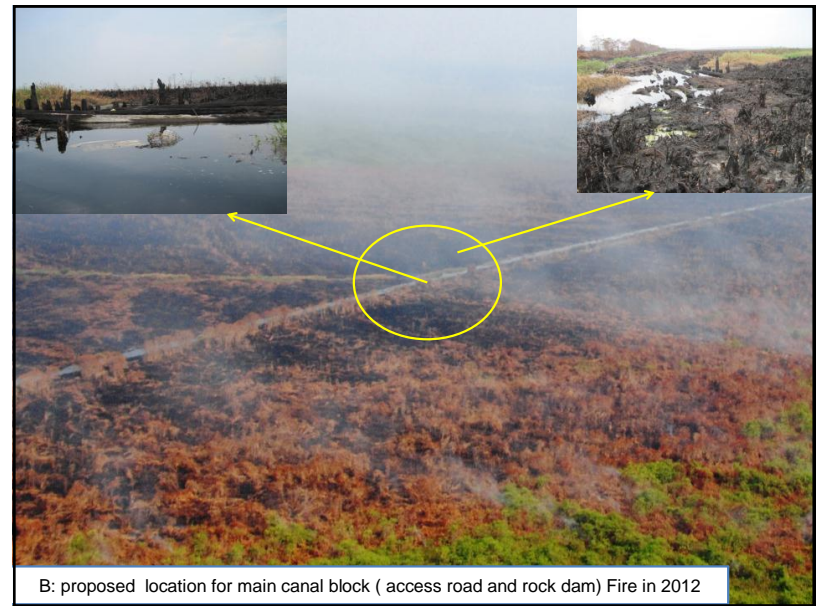


Location	Date identified	Size/date controlled	Time to control
Kg Tawakal	21 April	<3ha 23 April	3 days
Parit 4	11 May	<1ha 14 May	3 days
Parit 7	5 June	<1ha 7 June	3 days
Parit 7	21 June	<2ha 26 June	6 days
KDEB	25 June	<2 ha 27 June	3 days

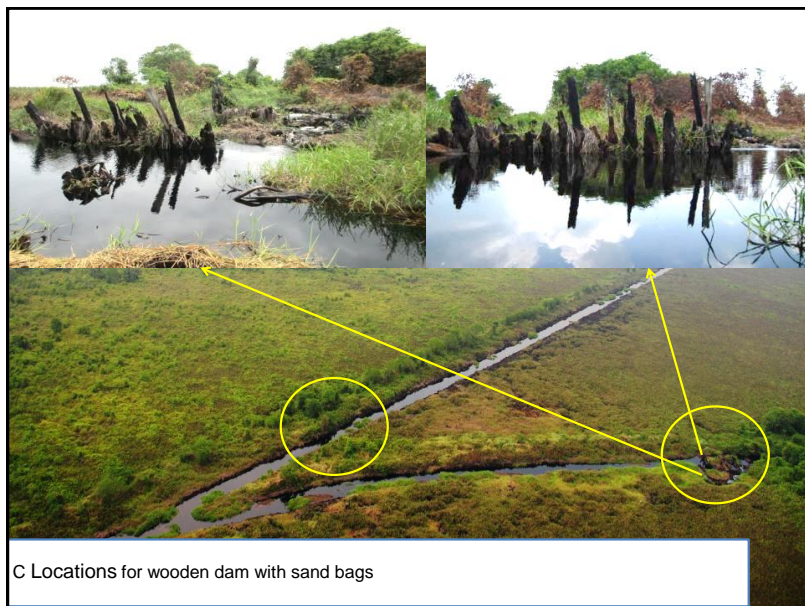
Agencies involved: GEC, SFD, Bomba, SHGSU



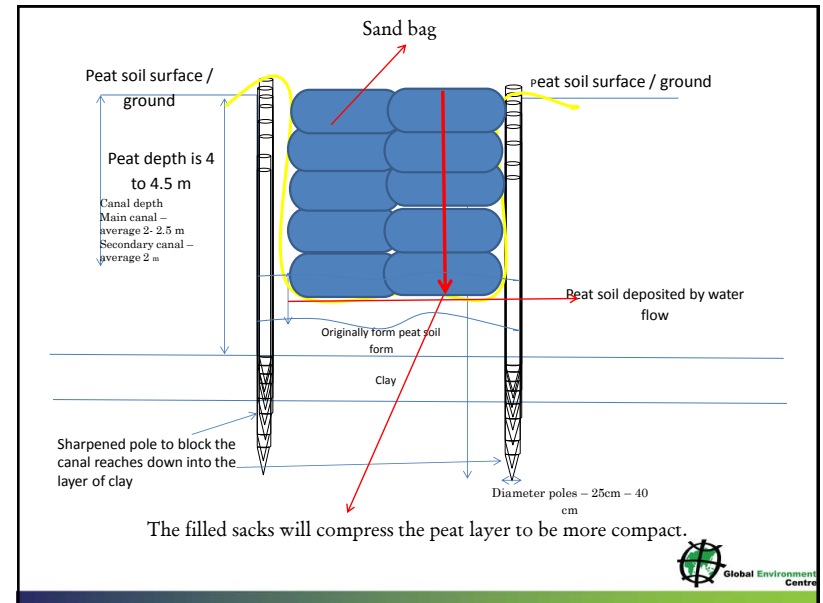
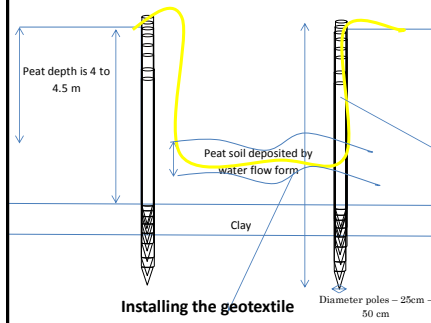






### e) Installing geotextile

Geotextile (size 15 m x 4m)





© Peter Lawson/Eastnews Press Agency Ltd

The Use of helicopter to translocate raw material



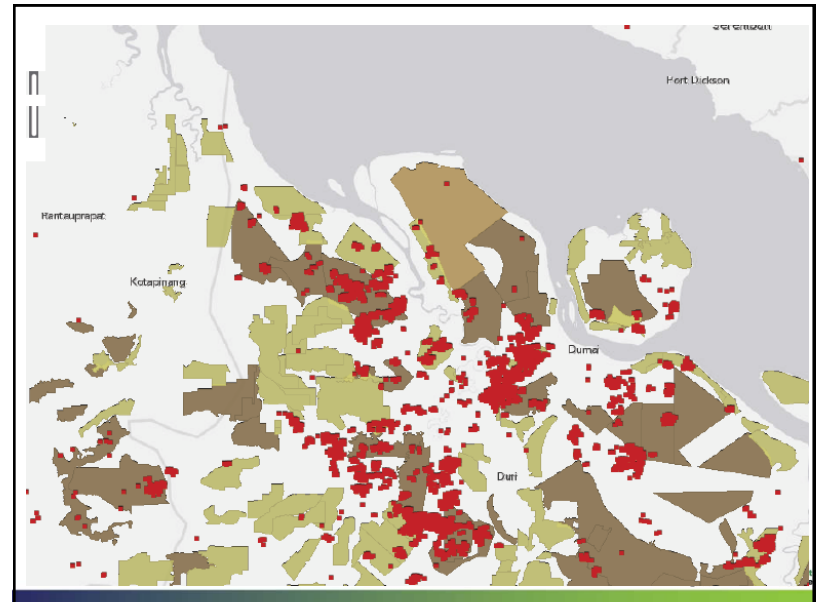
## Issues to discuss

- Root causes
- Actions taken by components
- Regional action and coordination
- Issues to bring to MSC meeting in Malaysia on 15-17 July



## Survey Riau 28 June-3 July

- GEC and Yayasan Mitra Insani
- Dumai, Rokan Hilir District
- Mumogo, Ranau Bais and Bantayan
- Assessment of situation and provision of support to Local community fire fighters

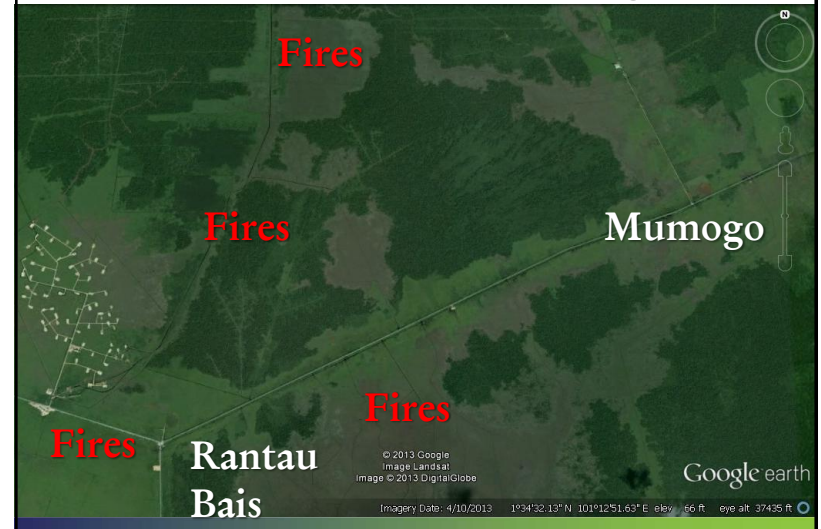


## RANTAU BAIS

- Several hundred Hectares, whole village affected
- Started near Pemburu
- Cause unknown
- Areas planted with Oil Palm and Pineapple
- Very dry, 2+ months without rain
- Village has 2 pumps, kept in centre
- Local land owner helped with 14 of his own pumps
- Mission team bought them a pump & food aid



## Rantau Bais and mumogo



## MOMUGO

- Large areas burnt
- Fires came from Rantau Bais
- Wind very strong, spread 5 km per hour
- Fire difficult to extinguish.
- Many personal pumps were used, fighting 24-7, many pumps broken
- Requested additional pump for MPA
- Mission bought one pump
- Additional resources are needed for patrolling and prevention.

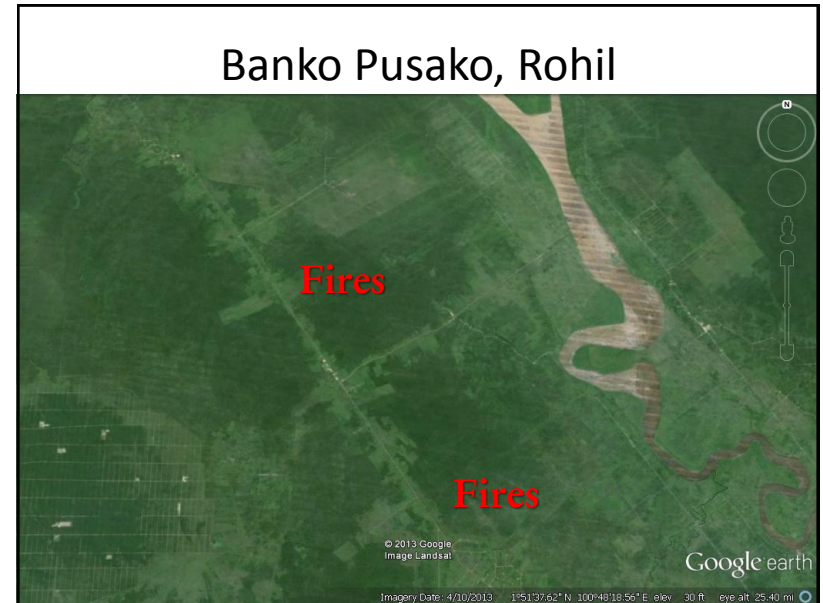
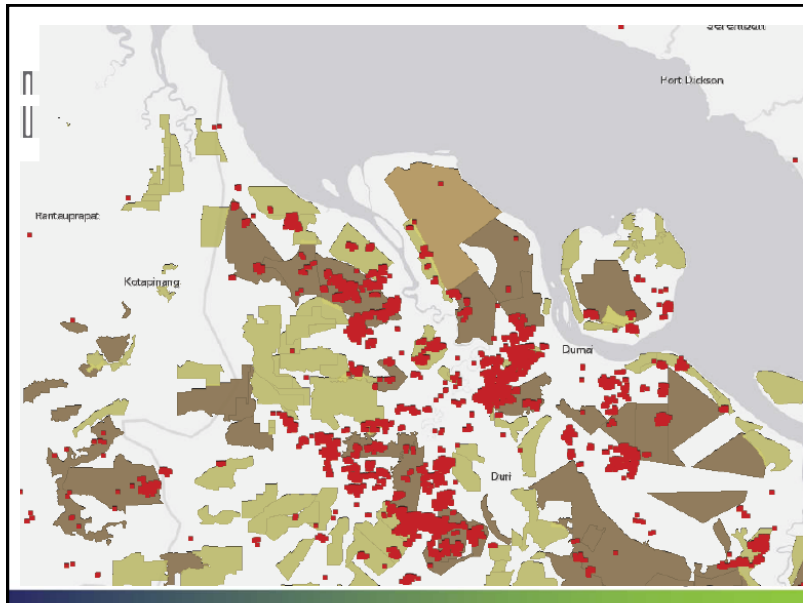


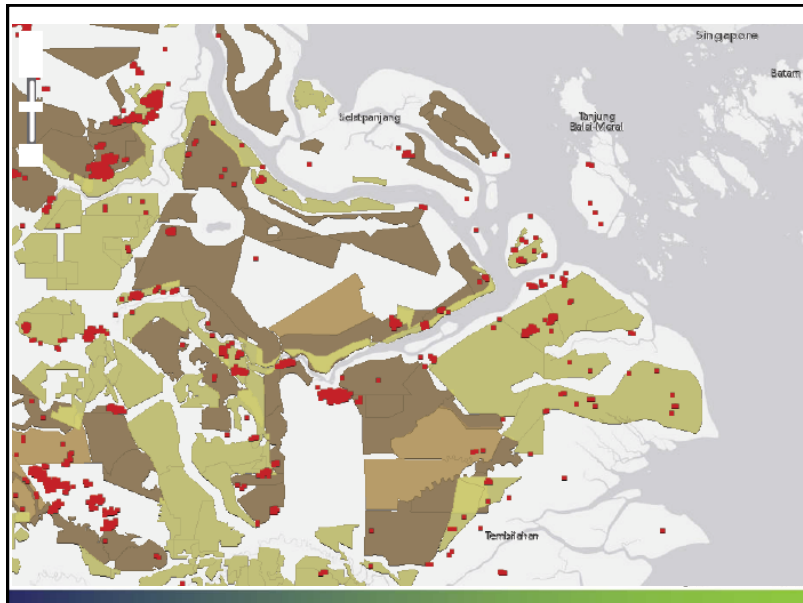
## DESA BANTAYAN

- 120 hectares community cooperative land burned
- Fire started in plantation areas
  - PT Diamond Raya (timber) – 800 hectares
  - PT Sindora Seraya (oil palm) – 2000 hectares
  - Total area burnt - 3000 ha
- MPA has no pumps, had to rent pumps from other land owners
- Mission bought 2 pumps for the MPA









## Harapan jaya, INHIL

