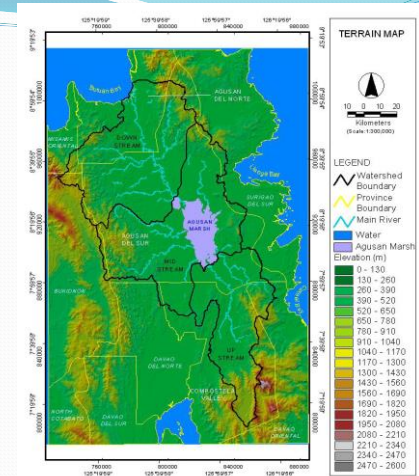


## BRIEF PICTORIAL INTRODUCTION TO THE VISIT TO AGUSAN PILOT SITE

### Map of Agusan River Basin showing the Agusan Marsh



Source: CTI Halcrow 2007

Photo taken in 1991 showing Agusan Marsh as a fine example of little disturbed floodplain wetland .

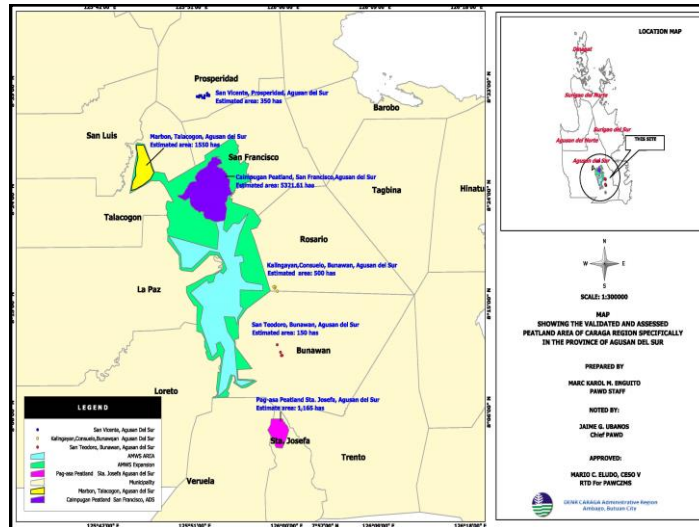
One of the most important freshwater marshland in the country along with Ligawasan Marsh in Mindanao and Candaba Marsh in Luzon.

Believed to hold about 15% of the country's freshwater swamp forest and resources.



### The Marsh holds the largest area of Peatlands





## ACCESS

From the municipality of San Francisco, 7 km to Sitio Alang-Alang, Brgy. Lapinigan (junction to Brgy Caimpugan (passing through national highway)

From Sitio Alang-Alang to Brgy. Caimpugan, 8 km passing through an all weather road (rough road)

Brgy Caimpugan to entrance of PSF, about 1km, passing through Gibong River.

## Barangay Caimpugan



## River Crossing through Bamboo Raft

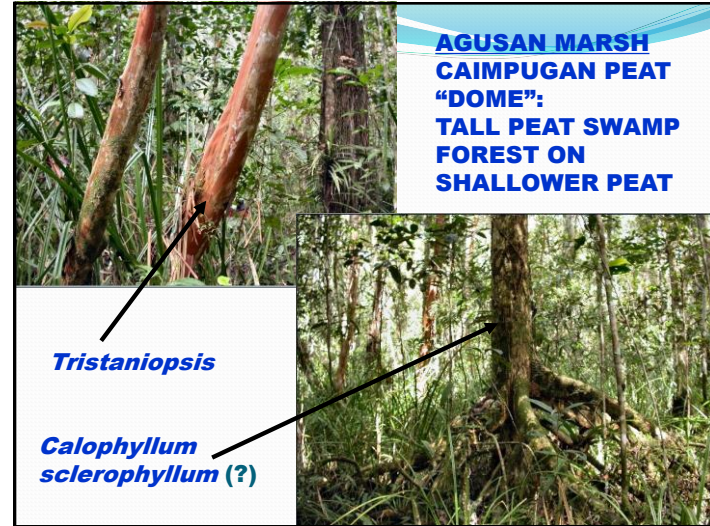




Caimpugan Peat Swamp Forest (about 30 to 45 min walk to to the edge of the forest)



**AGUSAN MARSH  
CAIMPUGAN PEAT  
“DOME”:  
TALL PEAT SWAMP  
FOREST ON  
SHALLOWER PEAT**



**CAIMPUGAN  
PEAT “DOME”:  
STUNTED PEAT  
SWAMP FOREST  
ON DEEP PEAT AT  
CENTRE OF DOME**



Locals refer to peatlands as huyong huyong.



Floating Vegetable Garden placed  
along the shores of Gibong River



**AGUSAN: PEAT SWAMP FOREST  
NEAR BUNAWAN (1991)**



**AGUSAN: PEAT SWAMP FOREST EDGE**



**AGUSAN: PEAT SWAMP FOREST CONVERSION  
TO RICE (2006)**





## Raised Bed Agriculture



Thank you!

