

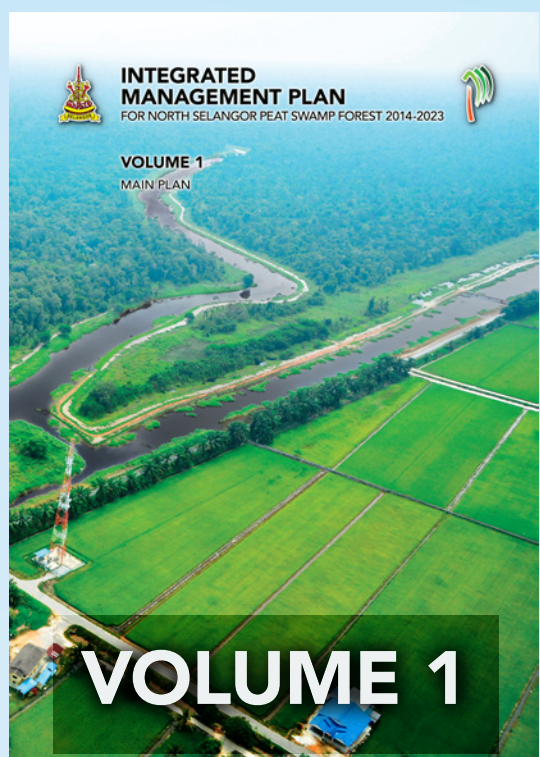
# INTEGRATED MANAGEMENT PLAN FOR NORTH SELANGOR PEAT SWAMP FOREST 2014-2023 (IMP-NSPSF 2014-2023)

North Selangor Peat Swamp Forest comprises of Raja Musa Forest Reserve, Sungai Karang Forest Reserve, Sungai Dusun Forest/Wildlife Reserve and part of Bukit Belata Forest Reserve Extension and adjacent areas of stateland forest. It covers an area of 81,304 hectares and is the second largest contiguous peat swamp forest in Peninsular Malaysia. Over the years, NSPSF had faced with many challenges (i.e. recurring fires and forest degradation) both from inside and outside the forest reserves.

In 2014, an IMP-NSPSF 2014-2023 (Vol. 1 and 2) was developed by the Selangor State Forestry Department with support from Global Environment Centre and International Fund for Agricultural Development - Global Environment Facility (IFAD-GEF), funded by ASEAN Peatland Forests Project and European Union supported SEApeat Project which is implemented under the framework of the ASEAN Peatland Management Strategy 2006-2020 (APMS). It was adopted in December 2014 by the Selangor State Government.

The proposed overall management objective for the ten-year planning period is:

***To maintain the geographical extent and integrity of the North Selangor Peatland Forest to sustain and rehabilitate the functions of the ecosystem as provider of goods and services for the benefit of the local and global communities.***



These combined measures will significantly reduce GHG emissions and help control further climate change.



Re-establish the hydrological functions and the natural water balance of the NSPSF.



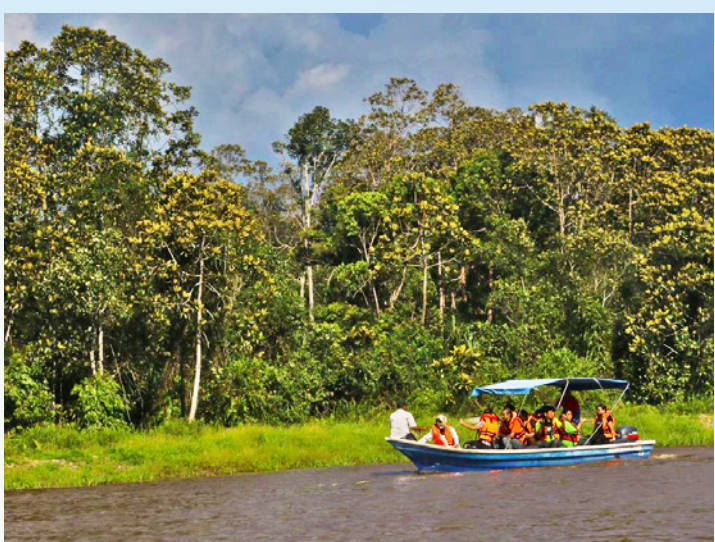
Prevent all fire occurrence and associated haze in and adjacent to NSPSF.



Restore the forest ecosystem of NSPSF by encouraging natural forest regeneration and where necessary supplement with planting in severely degraded sites.



Establish a buffer zone of at least 1,000m width along the entire outer boundaries of the NSPSF to minimize impacts of activities in adjacent areas.



Develop and promote sustainable use of NSPSF (i.e. eco-tourism, non-timber forest products, recreation and environmental awareness, education and research).



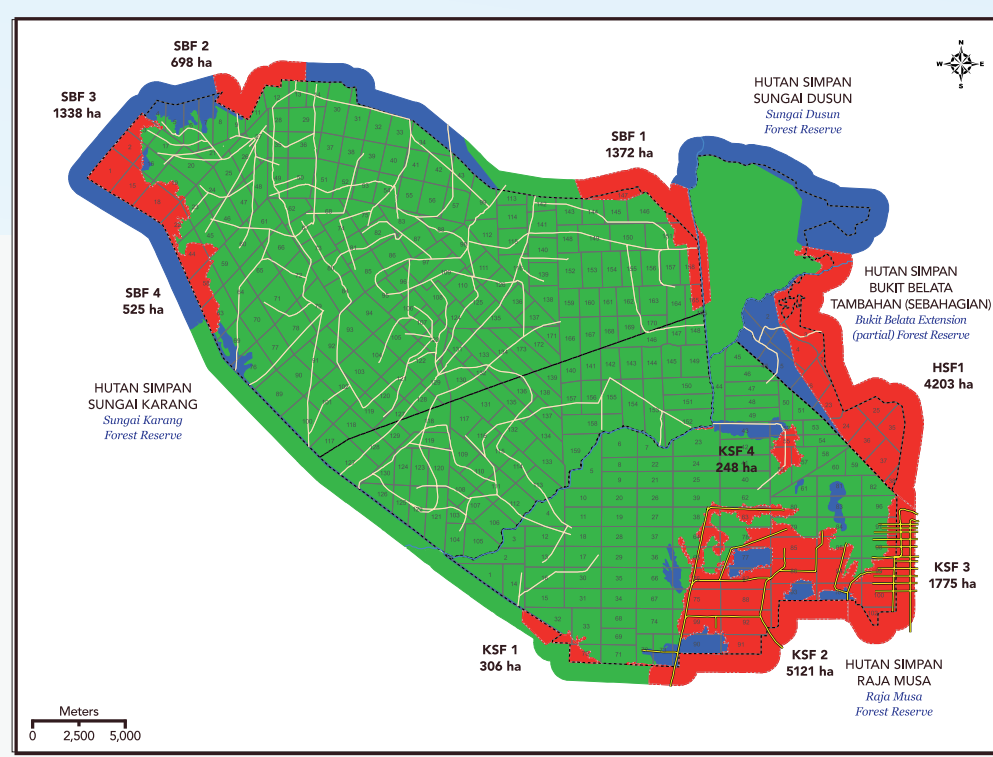
Promote conservation of peatland biodiversity and ecosystem functions.



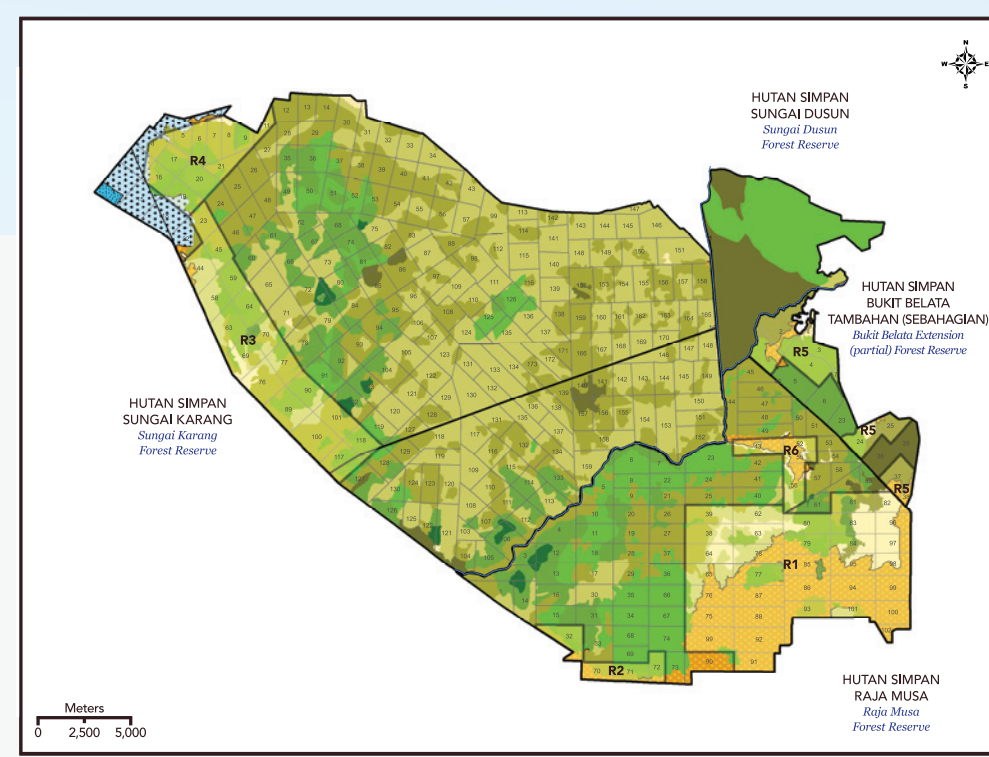
Maintain and enhance carbon stock, minimize GHG emission and develop options for carbon financing.



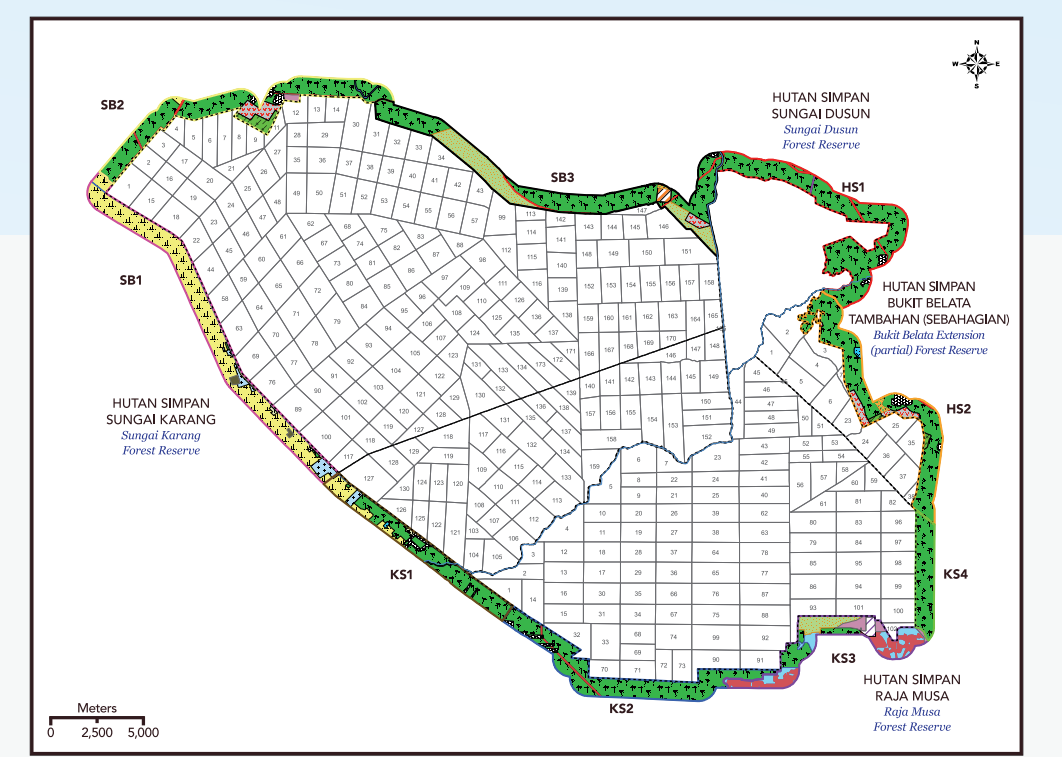
Promote multi-stakeholder participation in the implementation of the IMP.



**THE COOPERATIVE FIRE MANAGEMENT PLAN** provides guidance for multiple stakeholders to work together to prevent, prepare for, respond to and recover after fires.



**THE REHABILITATION PLAN** focuses on facilitating natural regeneration of forests by restoring the hydrology and ecology.



**THE BUFFER ZONE MANAGEMENT PLAN** covers an area of 15,000ha in a strip (1km wide) around the forest reserve to reduce and mitigate the negative influences of the activities taking place adjacent to the forest reserve.

**SUPPORTED BY:**



**Apfp-SEApeat**  
 ASEAN Peatland Ecosystems Project - Sustainable Management of Peatland Ecosystems in Southeast Asia



Investing in rural people



European Union

